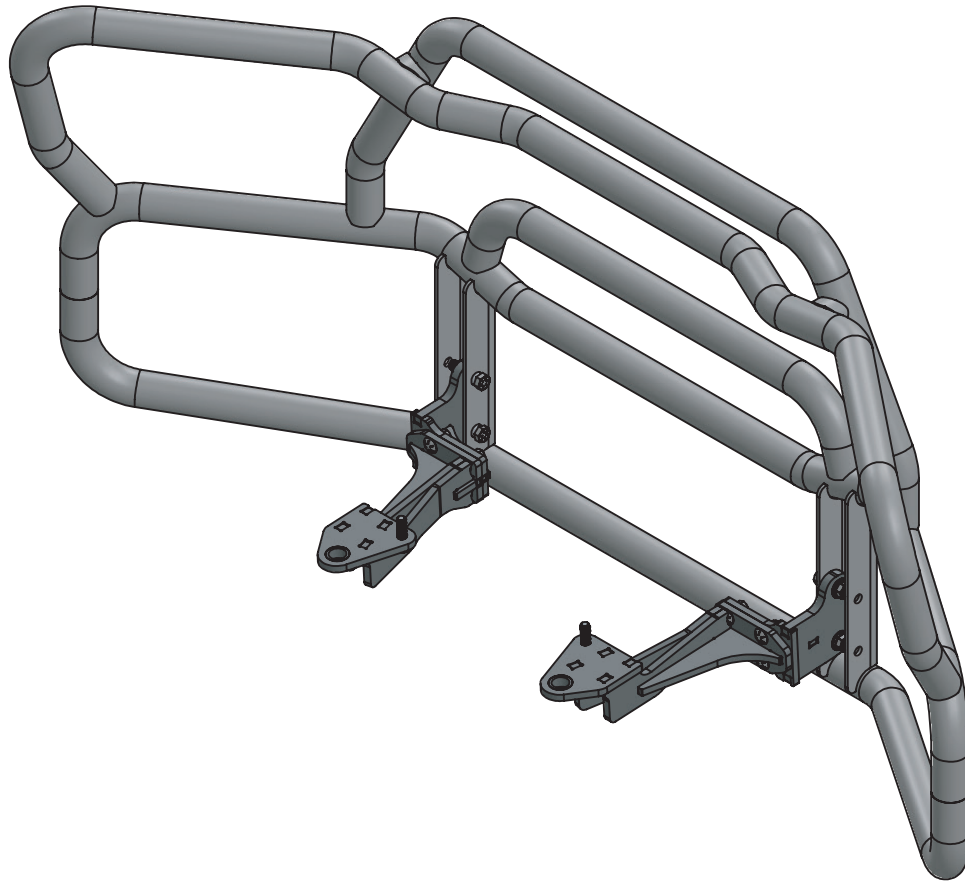


MOUNTING INSTRUCTIONS - MB-19HX-RM15 MT



CALL: (888) 902-2777 FOR INSTALLATION QUESTIONS OR EMAIL: INFO@EX-GUARD.COM



SEE INSTALLATION GUIDE FOR DETAILED INSTALL INSTRUCTIONS

IMPORTANT!! Any Ex-Guard grille guard, bracket kit, or hardware must be used with corresponding Ex-Guard components. Use of any other product or brand with Ex-Guard products will immediately void the warranty provided by Ex-Guard Industries.

© THIS DRAWING IS THE PROPERTY OF EX-GUARD INDUSTRIES, INC. COPYRIGHT IS RESERVED BY THEM AND THE DRAWING ISSUED ON CONDITION THAT IT MUST NOT BE USED FOR ANY OTHER PURPOSE OTHER THAN FOR WHICH IT WAS SUPPLIED AND NOT TO BE COPIED, REPRODUCED, RETAINED OR DISCLOSED TO ANY UNAUTHORIZED PERSON EITHER WHOLLY OR IN PART WITHOUT THE CONSENT IN WRITING OF EX-GUARD INDUSTRIES INC.

PARTS LIST - MB-19HX-RM15

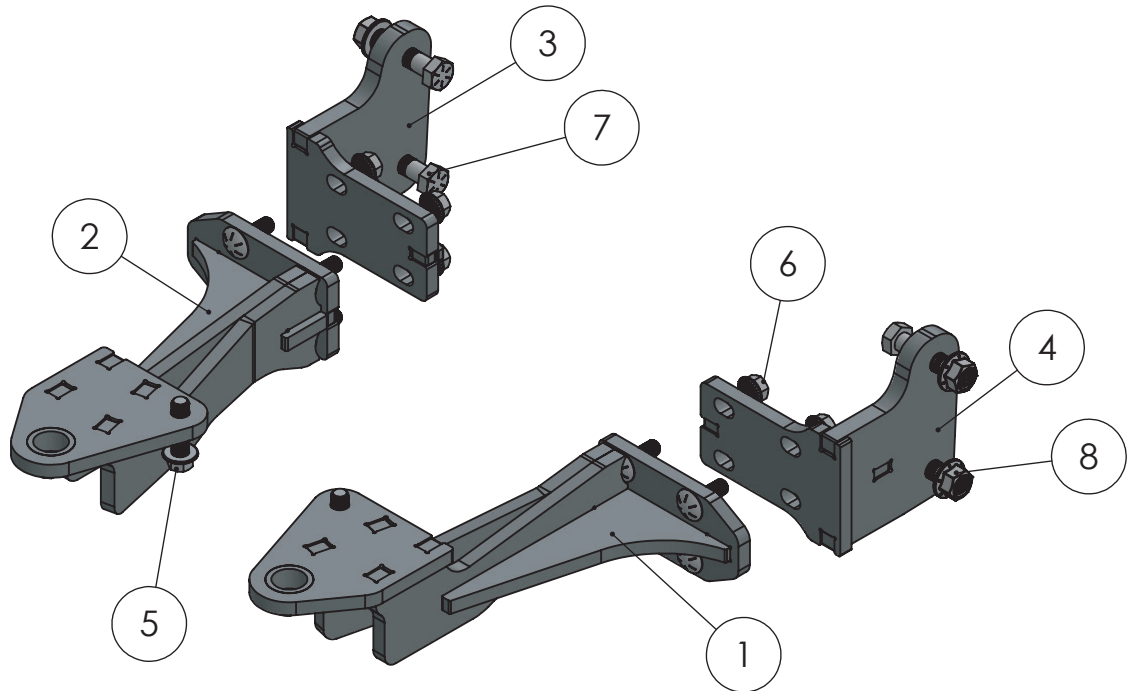
BOLT KIT - MB-BRK9

COMPATIBLE GUARDS

- Check <https://ex-guard.com/>



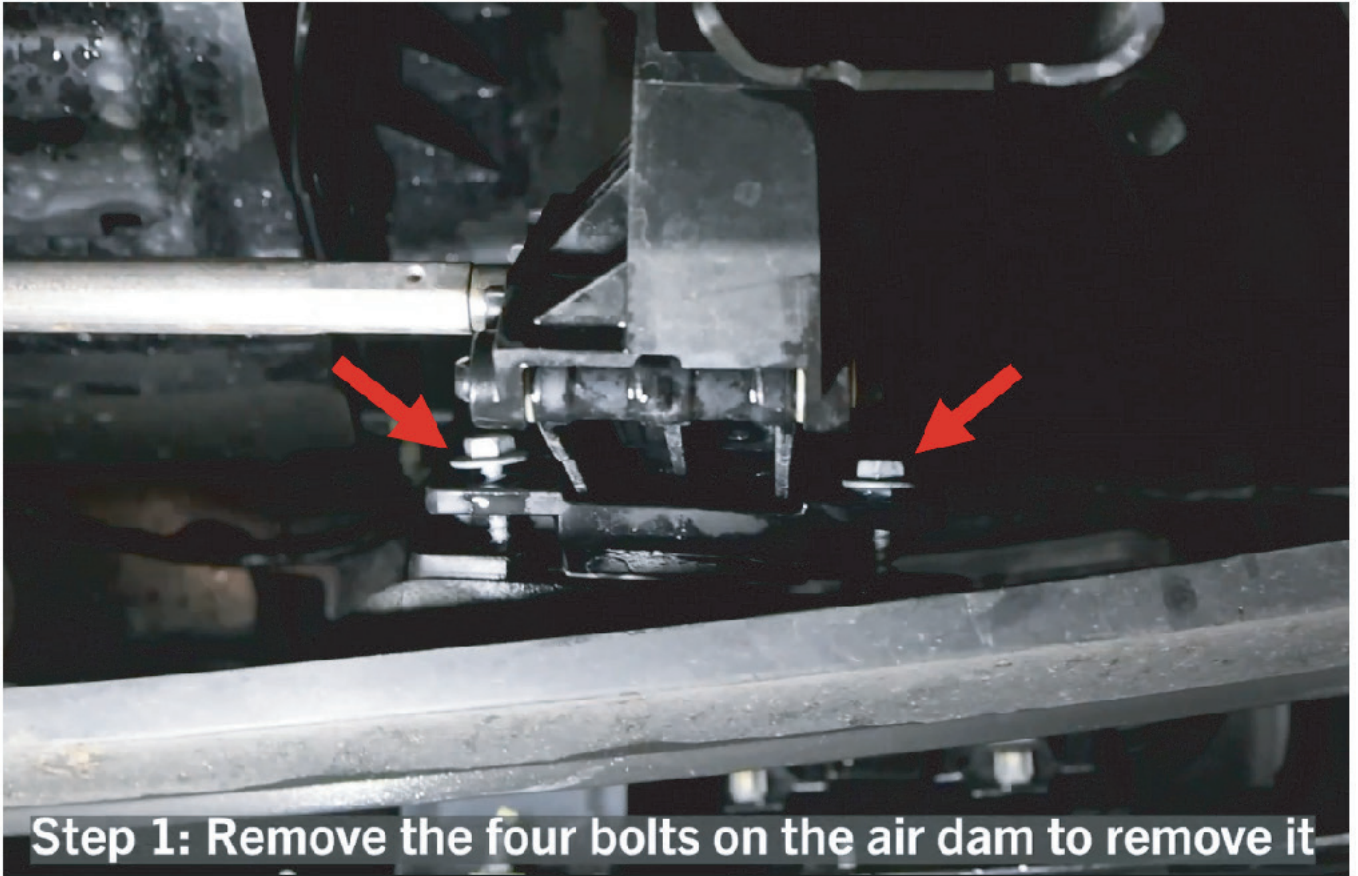
 CALL: (888) 902-2777 FOR INSTALLATION QUESTIONS OR EMAIL: INFO@EX-GUARD.COM



ITEM NO.	PART NUMBER	DESCRIPTION	QTY.
1	MB-19HX-RM15-BR10DR	DRIVER SIDE RECEIVER BRACKET	1
2	MB-19HX-RM15-BR10PS	PASSENGER SIDE RECEIVER BRACKET	1
3	MB-19HX-RM15-BR11PS	PASSENGER SIDE GUARD MOUNT BRACKET	1
4	MB-19HX-RM15-BR11DR	DRIVER SIDE GUARD MOUNT BRACKET	1
5	XG-001-M14-2.00FHHC5010.9ZY	M14-2MM X 50MM FLANGE HEX HEAD CAPSCREW	2
6	XG-001-50-13SFHNN8ZY	1/2"-13 SERRATED FLANGE HEX NUT	8
7	XG-001-62-11HHC2508ZY	5/8-11 X 2 1/2" HEX HEAD CAPSCREW	4
8	XG-001-62-11FHHNTL8ZY	5/8"-11 TOP LOCK FLANGE HEX NUT GRADE 8 YELLOW ZINC PLATED STEEL	4

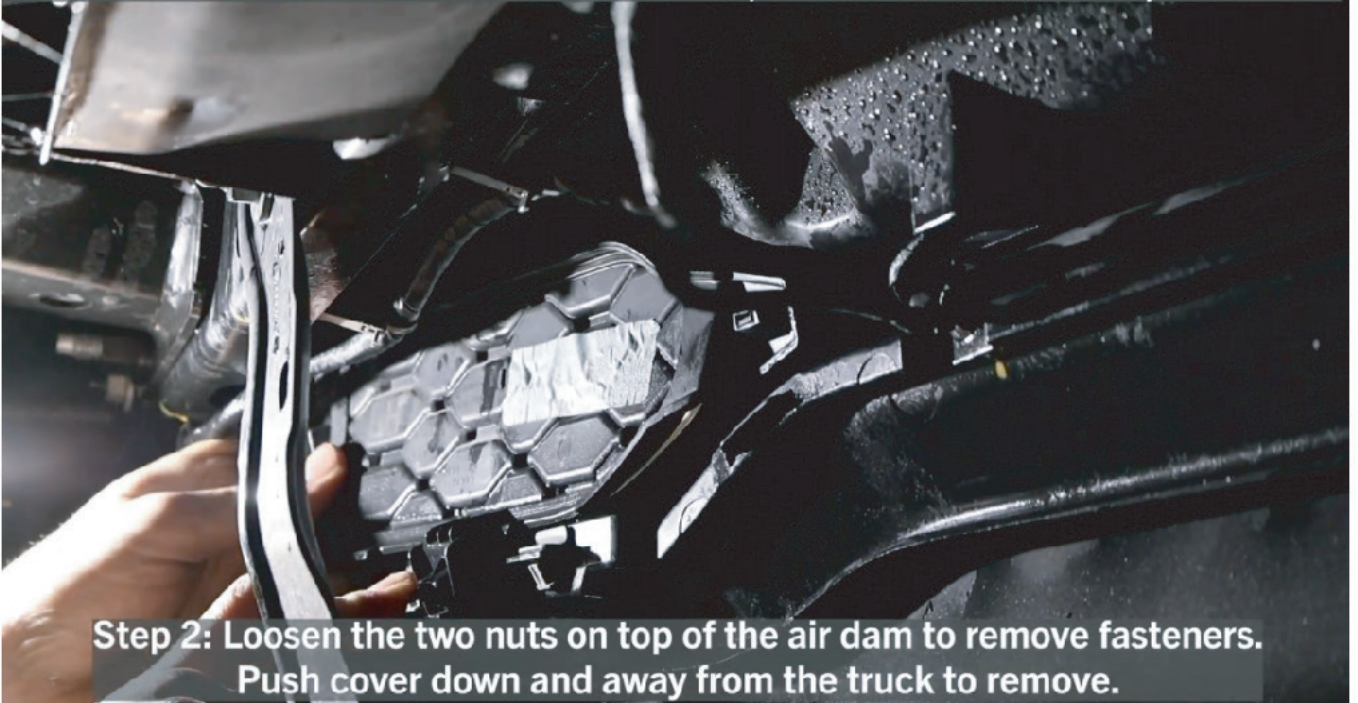
ATTENTION!! Any Ex-Guard grille guard, bracket kit, or hardware must be used with corresponding Ex-Guard components. Use of any other product or brand with Ex-Guard products will immediately void the warranty provided by Ex-Guard Industries.

INSTALLATION GUIDE FOR MB-19HX-RM15

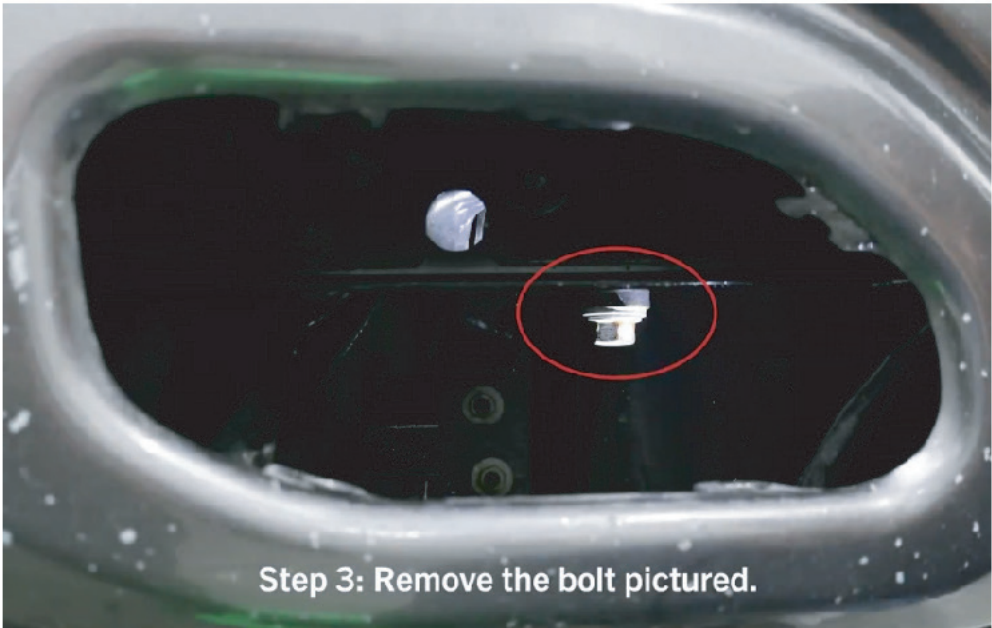


Step 1: Remove the four bolts on the air dam to remove it

NOTE: There are two variations of tow hook covers, the version shown uses clips to remove.



Step 2: Loosen the two nuts on top of the air dam to remove fasteners. Push cover down and away from the truck to remove.



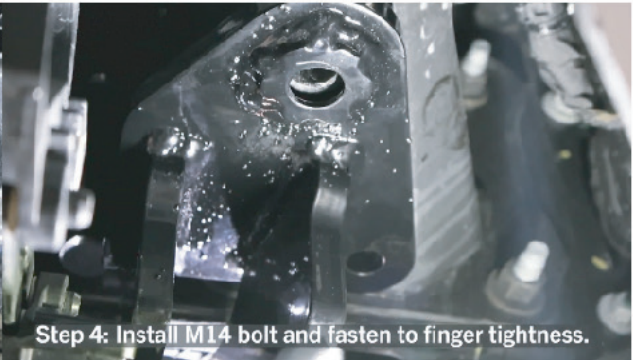
Step 3: Remove the bolt pictured.



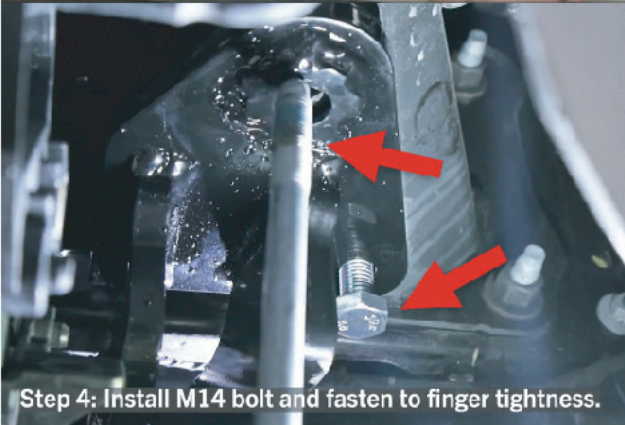
Step 3: Pull down while loosening bolt to get past the retaining clip



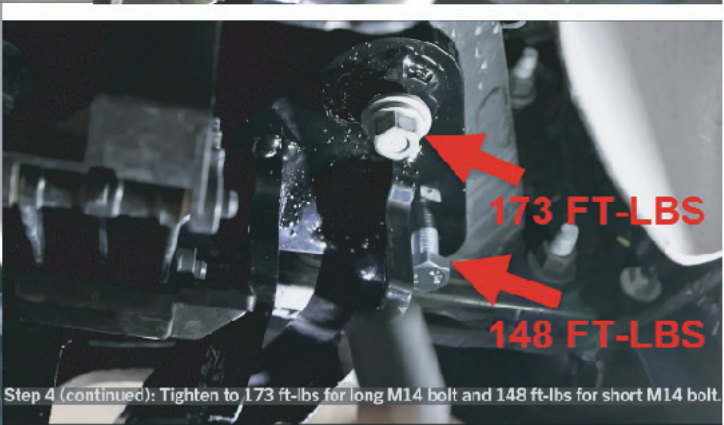
Step 4: Insert bracket and align bracket bushing with the bolt hole. (Where step 3 bolt was removed)



Step 4: Install M14 bolt and fasten to finger tightness.



Step 4: Install M14 bolt and fasten to finger tightness.

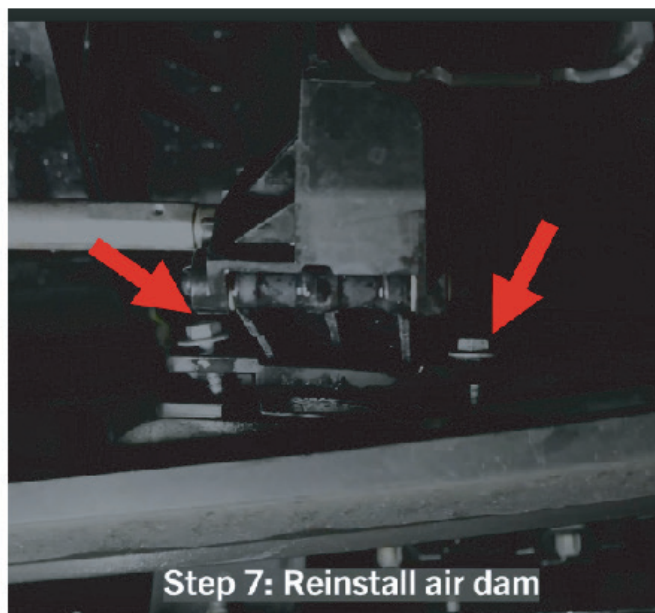


Step 4 (continued): Tighten to 173 ft-lbs for long M14 bolt and 148 ft-lbs for short M14 bolt.

Step 5: Fasten bracket onto guard, horn facing up and mounting plate facing out.



Step 6: Mount guard onto the truck using the 8 1/2" nuts provided.



Step 7: Reinstall air dam

DRIVE SAFE!

