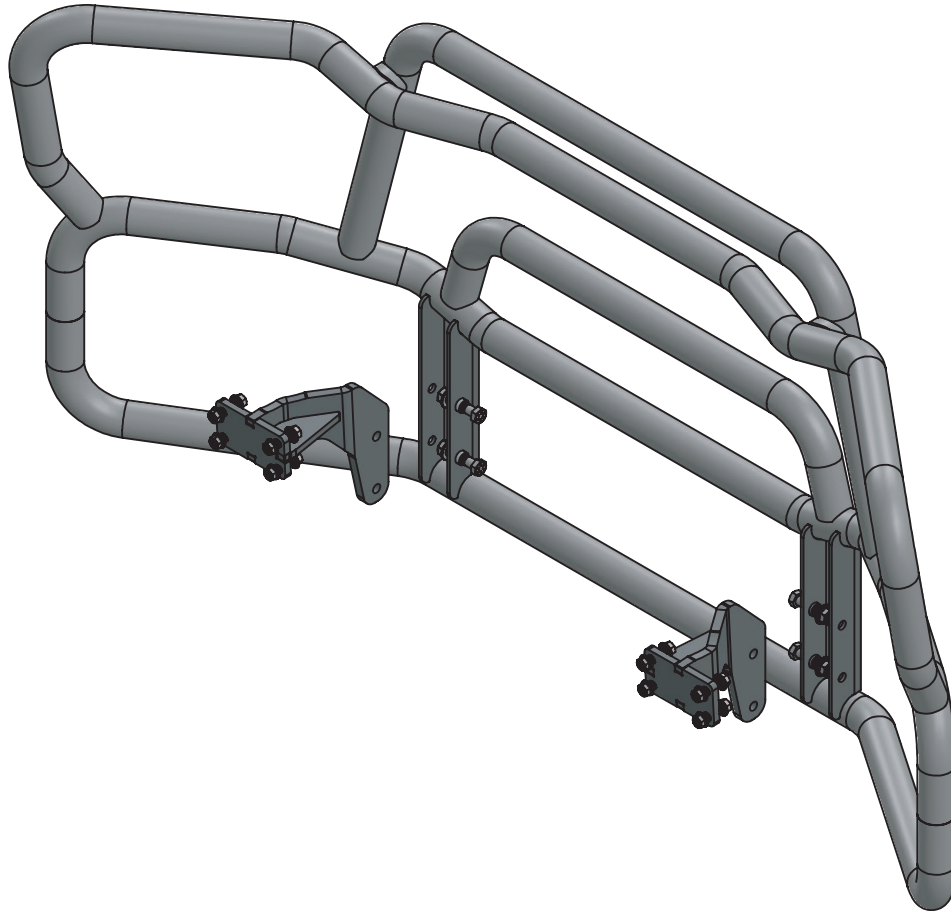


MOUNTING INSTRUCTIONS - MB-10FX-RM23 MT



CALL: (888) 902-2777 FOR INSTALLATION QUESTIONS OR EMAIL: INFO@EX-GUARD.COM



SEE INSTALLATION GUIDE FOR DETAILED INSTALL INSTRUCTIONS

IMPORTANT!! Any Ex-Guard grille guard, bracket kit, or hardware must be used with corresponding Ex-Guard components. Use of any other product or brand with Ex-Guard products will immediately void the warranty provided by Ex-Guard Industries.

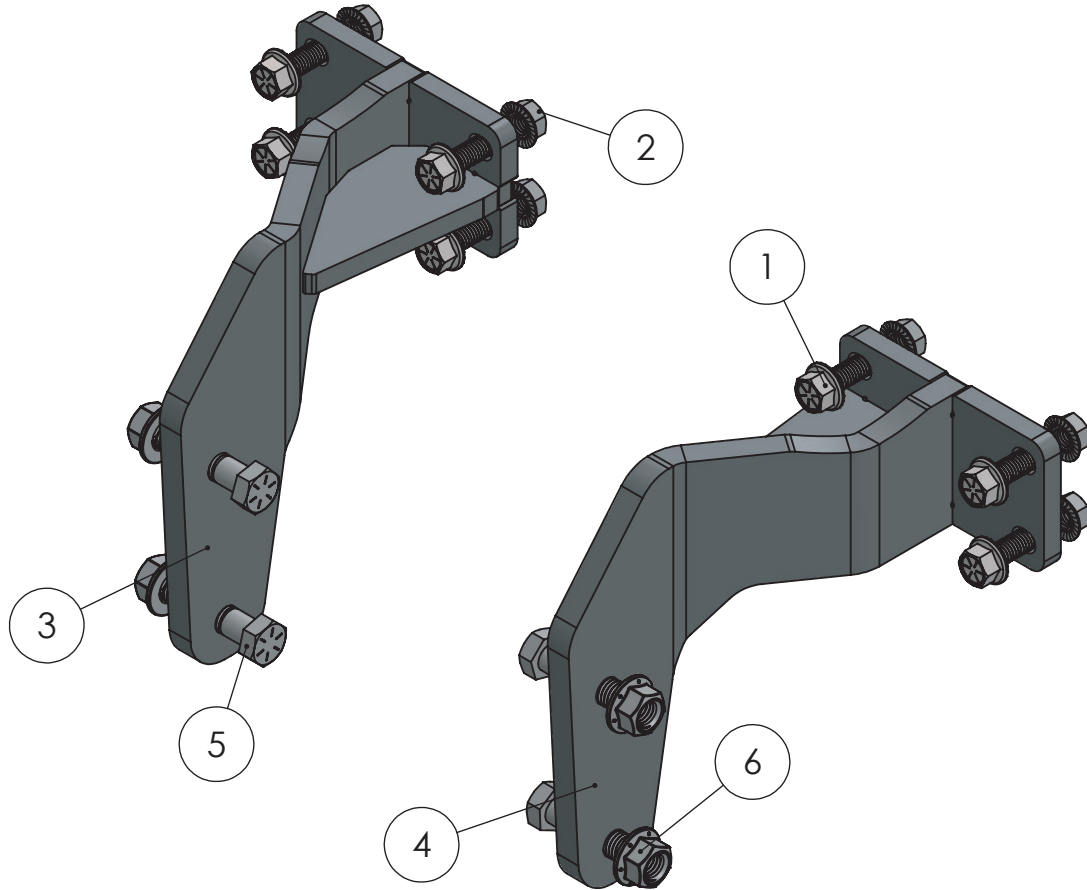
© THIS DRAWING IS THE PROPERTY OF EX-GUARD INDUSTRIES, INC. COPYRIGHT IS RESERVED BY THEM AND THE DRAWING ISSUED ON CONDITION THAT IT MUST NOT BE USED FOR ANY OTHER PURPOSE OTHER THAN FOR WHICH IT WAS SUPPLIED AND NOT TO BE COPIED, REPRODUCED, RETAINED OR DISCLOSED TO ANY UNAUTHORIZED PERSON EITHER WHOLLY OR IN PART WITHOUT THE CONSENT IN WRITING OF EX-GUARD INDUSTRIES INC.

PARTS LIST - MB-10FX-RM23

BOLT KIT - MB-BRK7

COMPATIBLE GUARDS

- Check <https://ex-guard.com/>





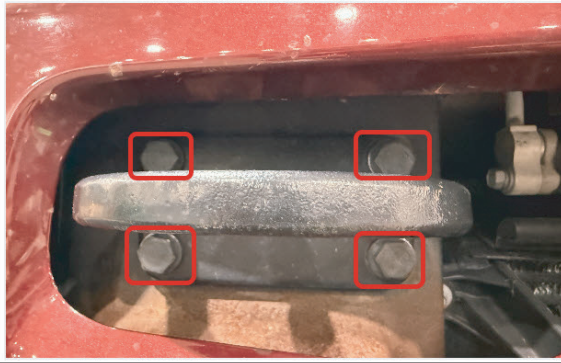
 CALL: (888) 902-2777 FOR INSTALLATION QUESTIONS OR EMAIL: INFO@EX-GUARD.COM



ITEM NO.	PART NUMBER	DESCRIPTION	QTY.
1	XG-001-50-13SFHHC1508ZY	1/2"-13 X 1 1/2" SERRATED FLANGE HEX HEAD CAPSCREW	8
2	XG-001-50-13SFHHN8ZY	1/2"-13 SERRATED FLANGE HEX NUT	8
3	MB-10FX-RM23-BR10DR	DR GUARD MOUNT BRACKET	1
4	MB-10FX-RM23-BR10PS	PS GUARD MOUNT BRACKET	1
5	XG-001-62-11HHC2508ZY	5/8-11 X 2 1/2" HEX HEAD CAPSCREW	4
6	XG-001-62-11FHHTL8ZY	5/8"-11 TOP LOCK FLANGE HEX NUT GRADE 8 YELLOW ZINC PLATED STEEL	4

ATTENTION!! Any Ex-Guard grille guard, bracket kit, or hardware must be used with corresponding Ex-Guard components. Use of any other product or brand with Ex-Guard products will immediately void the warranty provided by Ex-Guard Industries.

MB-10FX-RM23 INSTALL GUIDE



1
REMOVE TOW HOOKS BY
REMOVING THE 4 BOLTS.



2
BEHIND BUMPER VIEW OF
TOW HOOKS BOLTS THAT
NEED REMOVED.



3
IMAGE OF TOW HOOK AND
BOLTS ALREADY REMOVED.



4
INSTALL BRACKET AND 4
BOLTS & NUTS. TIGHTENING
TORQUE IS 100 FT LBS.



5
REPEAT STEPS 1 THROUGH 4
FOR OTHER SIDE BRACKET.



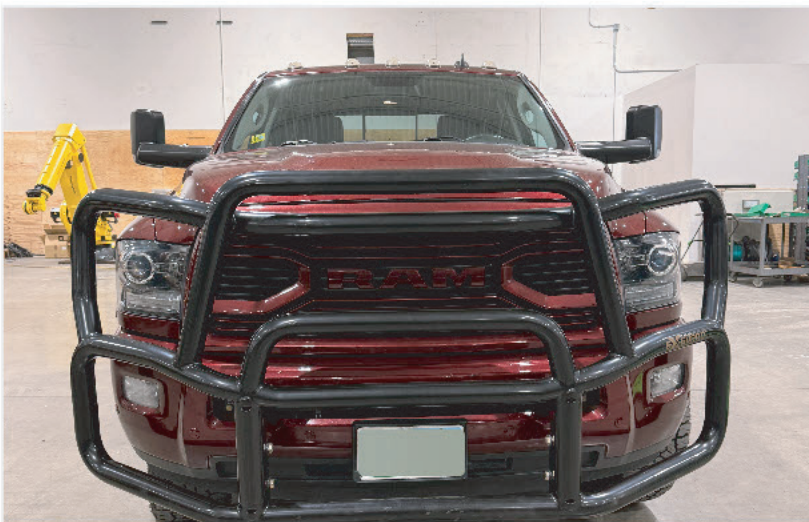
6

INSTALL GUARD BY ALIGNING HOLES TO BRACKET AND INSTALLING 2 BOLTS & NUTS. TIGHTENING TORQUE IS 150 FT LBS.



7

ANOTHER IMAGE OF GUARD AND BRACKET BOLTED TOGETHER.



8

DRIVE SAFE!