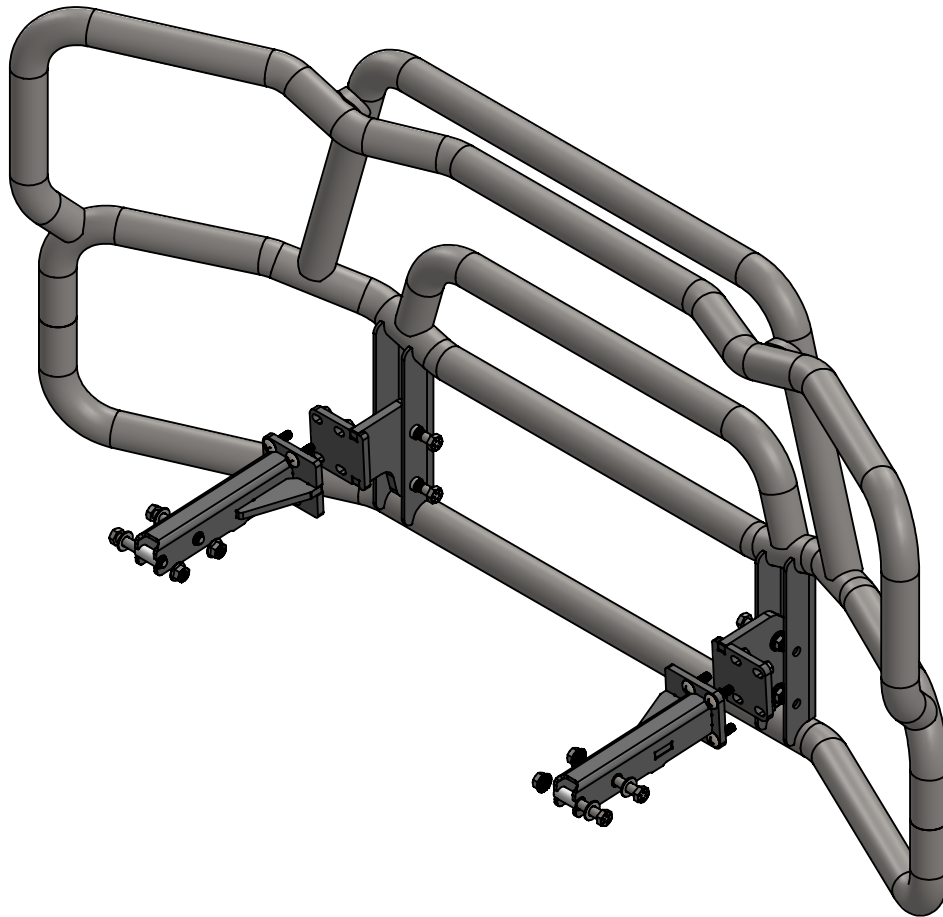


## MOUNTING INSTRUCTIONS - MB-19FX-RM23 MT



CALL: (888) 902-2777 FOR INSTALLATION QUESTIONS OR EMAIL: [INFO@EX-GUARD.COM](mailto:INFO@EX-GUARD.COM)



SEE INSTALLATION GUIDE FOR DETAILED INSTALL INSTRUCTIONS

**IMPORTANT!!** Any Ex-Guard grille guard, bracket kit, or hardware must be used with corresponding Ex-Guard components. Use of any other product or brand with Ex-Guard products will immediately void the warranty provided by Ex-Guard Industries.

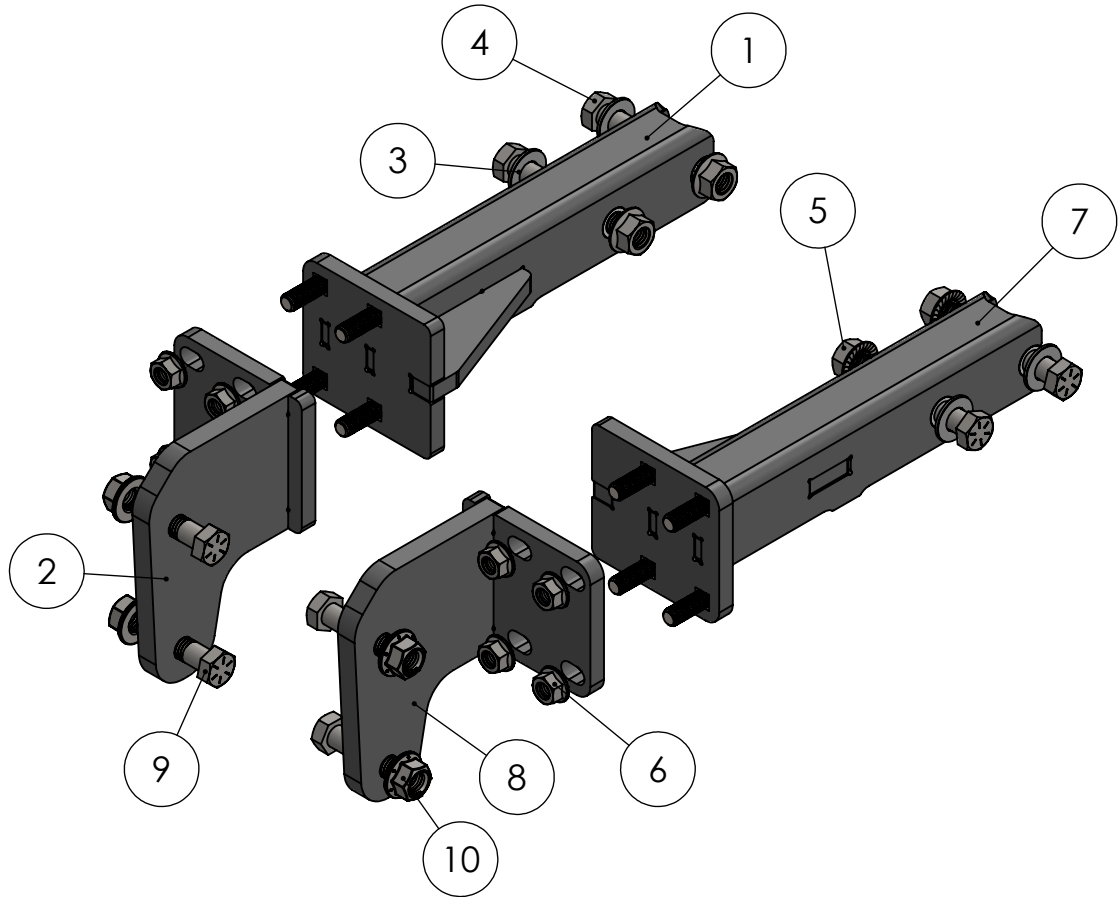
© THIS DRAWING IS THE PROPERTY OF EX-GUARD INDUSTRIES, INC. COPYRIGHT IS RESERVED BY THEM AND THE DRAWING ISSUED ON CONDITION THAT IT MUST NOT BE USED FOR ANY OTHER PURPOSE OTHER THAN FOR WHICH IT WAS SUPPLIED AND NOT TO BE COPIED, REPRODUCED, RETAINED OR DISCLOSED TO ANY UNAUTHORIZED PERSON EITHER WHOLLY OR IN PART WITHOUT THE CONSENT IN WRITING OF EX-GUARD INDUSTRIES INC.

## PARTS LIST - MB-19FX-RM23

### BOLT KIT - MB-BRK6

### COMPATIBLE GUARDS

- Check <https://ex-guard.com/>



ITEM NO.	PART NUMBER	DESCRIPTION	QTY.
1	MB-19FX-RM23-BR10DR	DR RECIEVER BRACKET ASSEMBLY	1
2	MB-19FX-RM23-BR11DR	DR GUARD MOUNT BRACKET ASSEMBLY	1
3	XG-001-62-SW8ZY	5/8\" SAE WASHER	4
4	XG-001-62-11HHC4008ZY	5/8-11 X 4\" HEX HEAD CAPSCREW	4
5	XG-001-62-11SFHNN5Z	5/8-11 SERRATED FLANGE HEX NUT	4
6	XG-001-50-13SFHNN8ZY	1/2-13 SERRATED FLANGE HEX NUT	8
7	MB-19FX-RM23-BR10PS	PS RECIEVER BRACKET ASSEMBLY	1
8	MB-19FX-RM23-BR11PS	PS GUARD MOUNT BRACKET ASSEMBLY	1
9	XG-001-62-11HHC2508ZY	5/8-11 X 2 1/2\" HEX HEAD CAPSCREW	4
10	XG-001-62-11FHHNTL8ZY	5/8-11 TOP LOCK FLANGE HEX NUT GRADE 8 YELLOW ZINC PLATED STEEL	4

**ATTENTION!!** Any Ex-Guard grille guard, bracket kit, or hardware must be used with corresponding Ex-Guard components. Use of any other product or brand with Ex-Guard products will immediately void the warranty provided by Ex-Guard Industries.



CALL: (888) 902-2777 FOR INSTALLATION QUESTIONS OR EMAIL: [INFO@EX-GUARD.COM](mailto:INFO@EX-GUARD.COM)

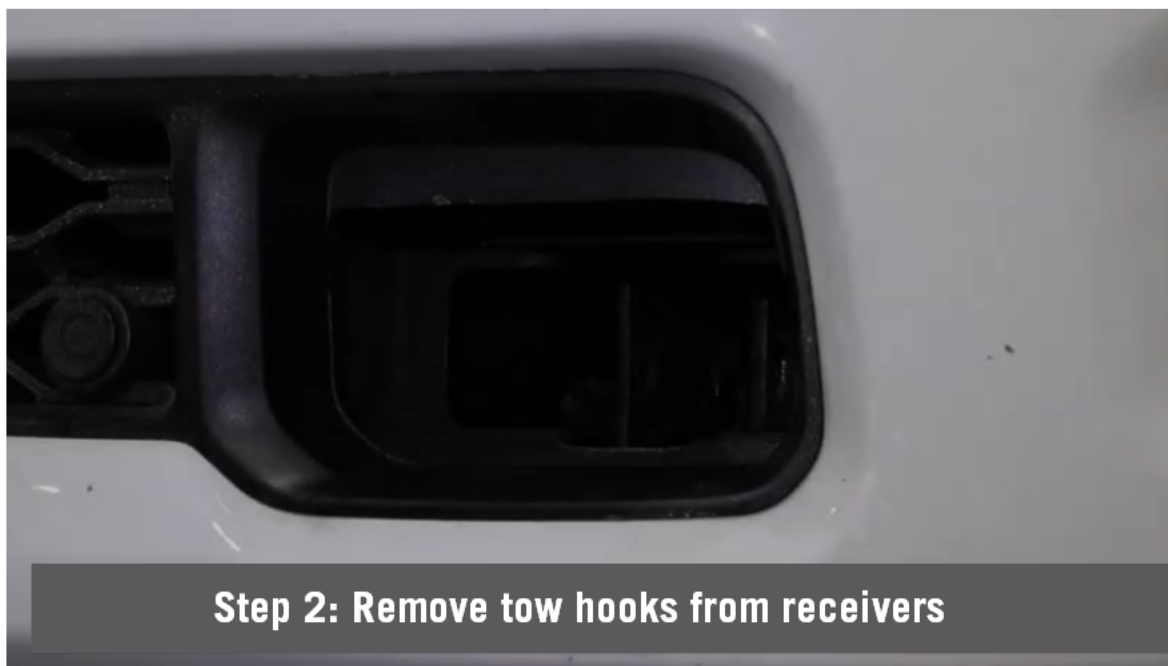




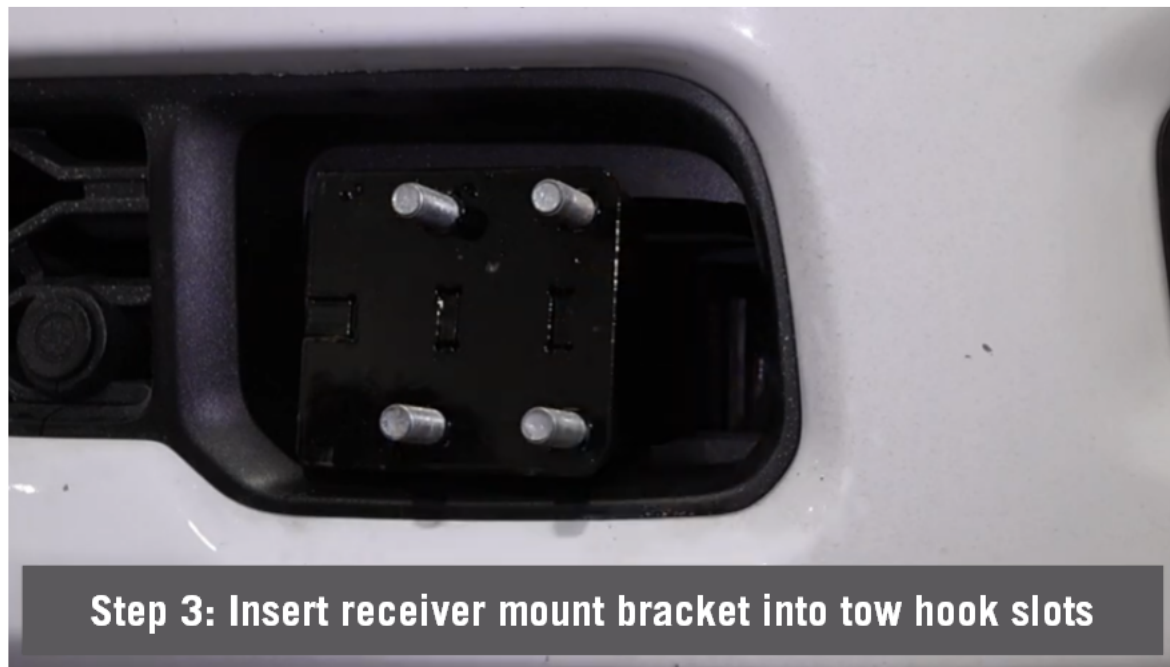


**Step 1: Locate the tow hook bolts and remove the bolts.**

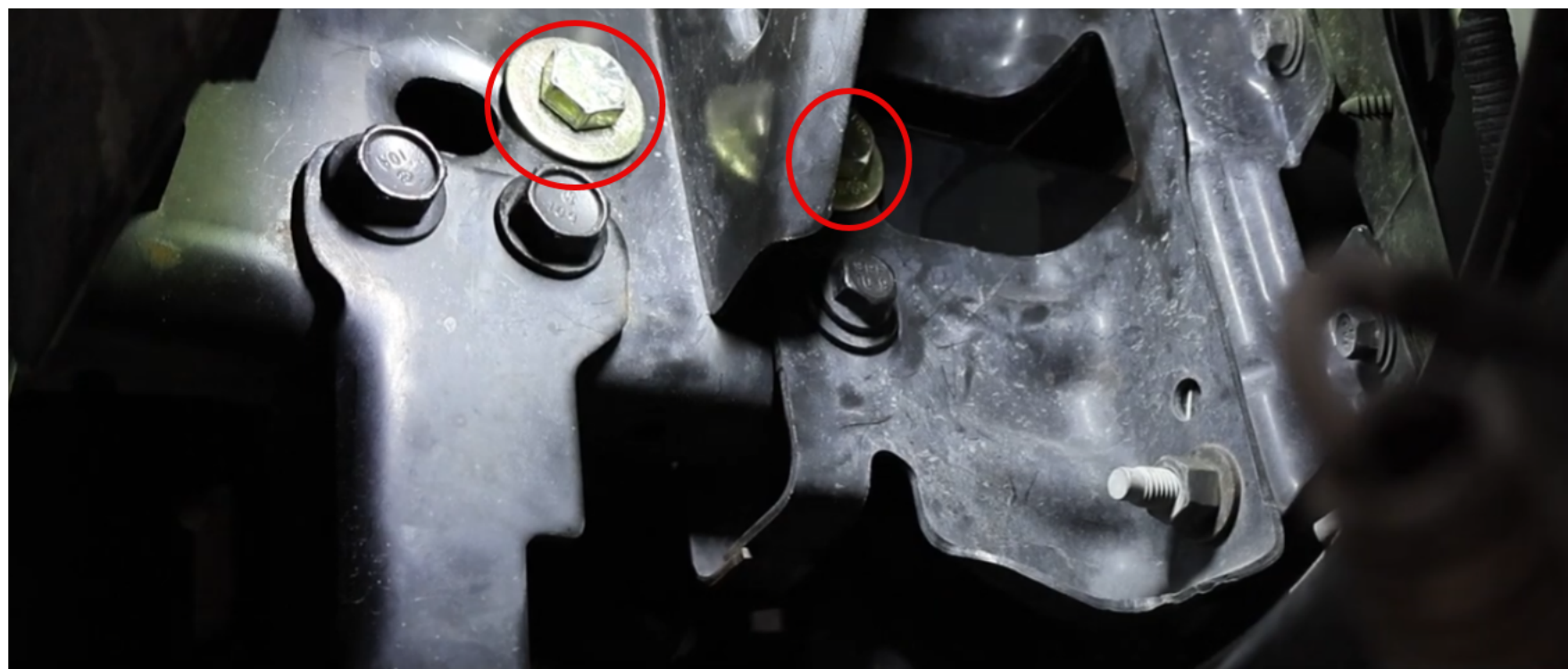
**Repeat on other side.**



**Step 2: Remove tow hooks from receivers**



**Step 3: Insert receiver mount bracket into tow hook slots**



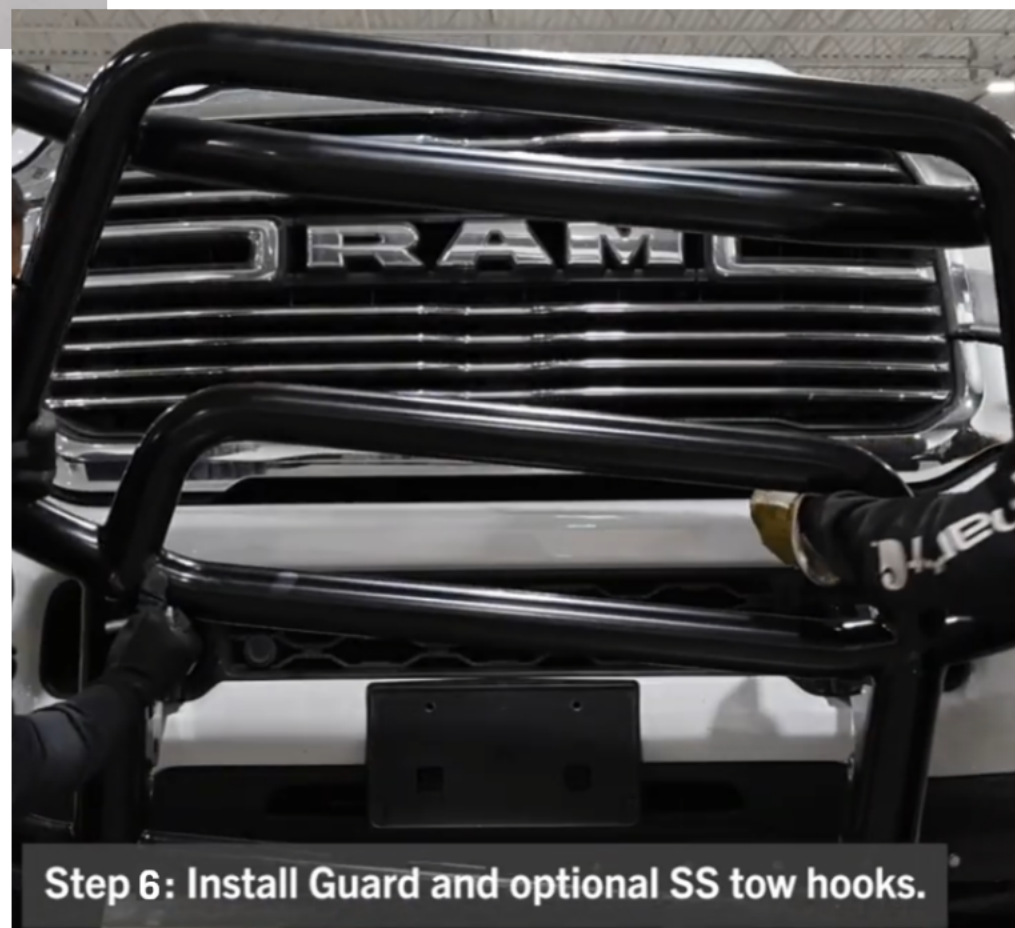
**Step 4: Reinstall bolts and hand tighten nuts on to the back side, then tighten down fully.**

**Repeat on other side.**



**Step 5: Install guard mount brackets, hand tighten nuts.**

**Repeat on other side.**



**Step 6: Install Guard and optional SS tow hooks.**



**Step 7: Tighten down guard mount brackets**



**Step 8: Insert and tighten down bolts that attach the guard to the bracket  
(Install TH-S at this step if applicable)**





**DRIVE SAFE!**

