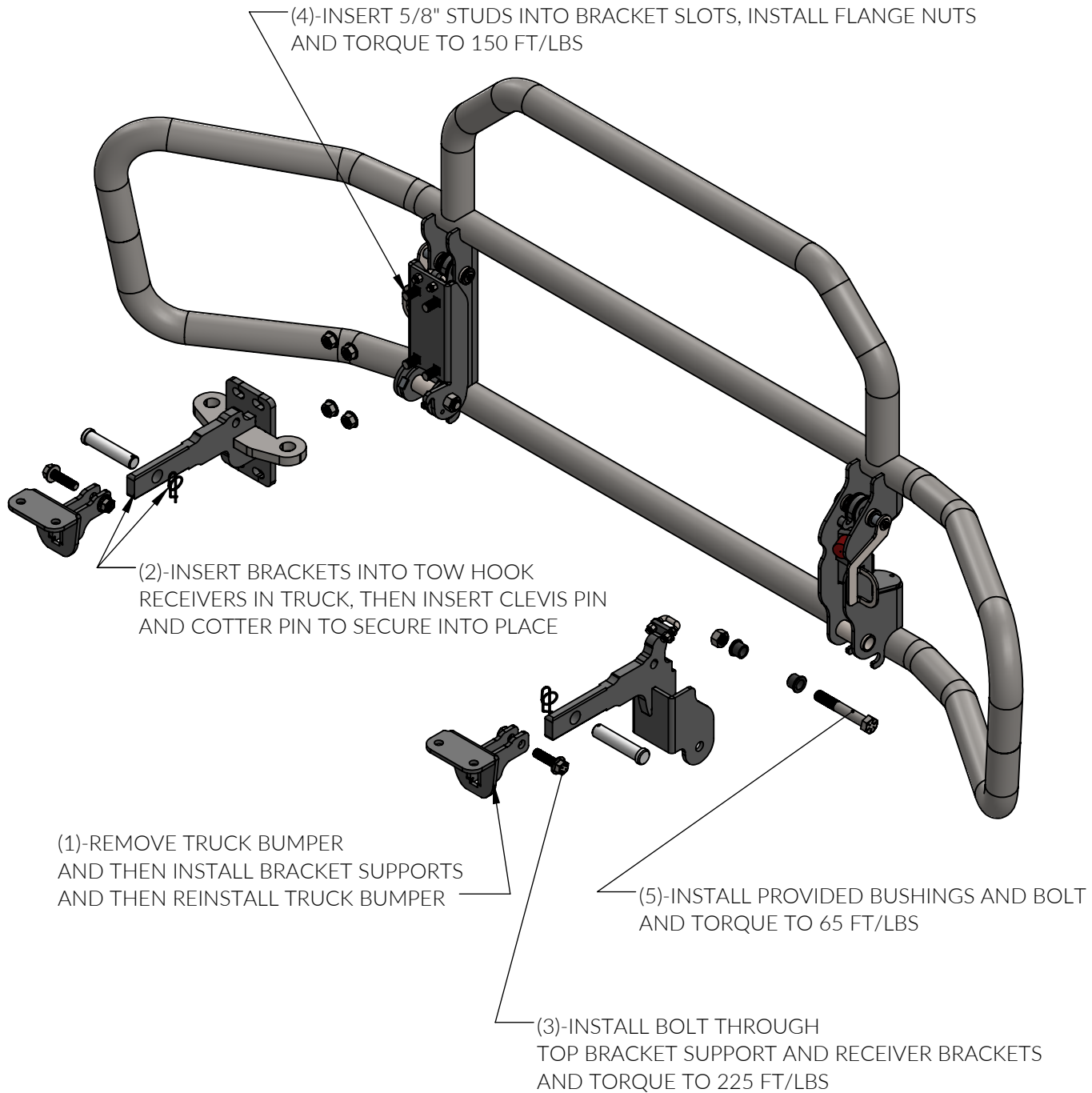


# MOUNTING INSTRUCTIONS - XG-24KT680-OS MT



CALL: (888) 902-2777 FOR INSTALLATION QUESTIONS OR EMAIL: [INFO@EX-GUARD.COM](mailto:INFO@EX-GUARD.COM)



**IMPORTANT!!** Any Ex-Guard grille guard, bracket kit, or hardware must be used with corresponding Ex-Guard components. Use of any other product or brand with Ex-Guard products will immediately void the warranty provided by Ex-Guard Industries.

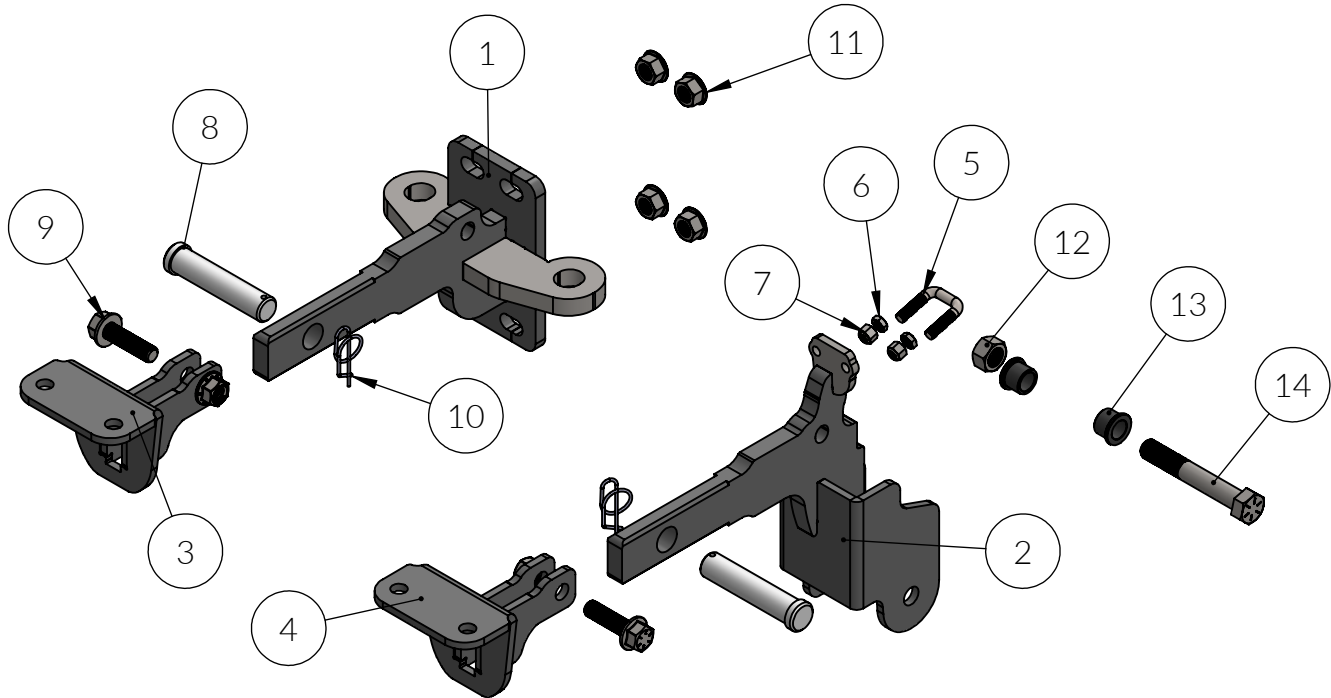
© THIS DRAWING IS THE PROPERTY OF EX-GUARD INDUSTRIES, INC. COPYRIGHT IS RESERVED BY THEM AND THE DRAWING ISSUED ON CONDITION THAT IT MUST NOT BE USED FOR ANY OTHER PURPOSE OTHER THAN FOR WHICH IT WAS SUPPLIED AND NOT TO BE COPIED, REPRODUCED, RETAINED OR DISCLOSED TO ANY UNAUTHORIZED PERSON EITHER WHOLLY OR IN PART WITHOUT THE CONSENT IN WRITING OF EX-GUARD INDUSTRIES INC.

# PARTS LIST - XG-24KT680-OS

## BOLT KIT - XG-24KT680-OS-BK

### COMPATIBLE GUARDS

- Check <https://ex-guard.com/>



ITEM NO.	PART NUMBER	DESCRIPTION	QTY.
1	XG-24KT680-OS-BR10DS	MOUNTING BRACKET DS	1
2	XG-24KT680-OS-BR10PS	MOUNTING BRACKET PS	1
3	XG-24KP-BR08DS	TOP SUPPORT BRACE DS	1
4	XG-24KP-BR08PS	TOP SUPPORT BRACE PS	1
5	XG-001-37-24U175SS	SQUARE U-BOLT	1
6	XG-001-37-24THHNS	3/8"-24 THIN HEX HEAD NUT	2
7	XG-001-37-24HHNLS	3/8"-24 NYLON INSERT HEX NUT	2
8	XG-001-100-CP4505Z	1" X 4 1/2" CLEVIS PIN	2
9	XG-001-62-11FHHNC2258ZY	5/8"-11 X 2 1/4" FLANGE HEX HEAD CAPSCREW	2
10	XG-001-100-LCPSP	1" LOCKING COTTER PIN	2
11	XG-001-62-11FHHNL5Z	5/8"-11 FLANGE PATCH HEX NUT	4
12	XG-001-75-10HHNL5Z	3/4"-10 HEX NUT PATCHED	1
13	XG-L03	HD COATED HINGE BUSHING	2
14	XG-001-75-10HHC500SS	3/4"-10 X 5" HEX HEAD CAPSCREW	1

ATTENTION!! Any Ex-Guard grille guard, bracket kit, or hardware must be used with corresponding Ex-Guard components. Use of any other product or brand with Ex-Guard products will immediately void the warranty provided by Ex-Guard Industries.



CALL: (888) 902-2777 FOR INSTALLATION QUESTIONS OR EMAIL: [INFO@EX-GUARD.COM](mailto:INFO@EX-GUARD.COM)

