



CV-14RPM-25

CV-14RPM-25

INSTALLATION INSTRUCTIONS

EX-GUARD®

888.902.2777

CUSTOMERCARE@EX-GUARD.COM
EX-GUARD.COM

TOOLS NEED FOR INSTALLATION

- 1/2" IMPACT DRIVER
- 1/4" IMPACT DRIVER
- STRAIGHT BLADE SCREW DRIVER
- TORQUE WRENCH
- 1 1/8" DEEP SOCKET
- 15/16" SOCKET
- 8 MM SOCKET
- 15 MM SOCKET
- 17 MM SOCKET
- T-30 TORX BIT

INCLUDED WITH THE GUARD AND BRACKET KIT

- QTY 2 - CV-14PM03 GUARD BRACKETS
- QTY 1 - CV-14PM01R PASSENGER SIDE BRACKET
- QTY 1 - CV-14PM01L DRIVER SIDE BRACKET
- QTY 2 - 3/4"-9 LOCK NUT
- QTY 6 - 10 MM x 1.25 x 35 MM BOLTS
- QTY 4 - 5/8"-11 x 2-1/2" BOLTS
- QTY 4 - 5/8" FLANGE AUTOMATION LOCK NUT

STEP 2:

REMOVE 5 BOLTS THAT SECURE THE SHROUD USING THE 8 MM SOCKET

STEP 1:

REMOVE 6 BODY SCREWS USING T-30 TORX BIT



STEP 3:

REMOVE 1 BOLT THAT SECURES THE SHROUD USING 15 MM SOCKET

STEP 4:

REMOVE 4 BODY SCREWS THAT SECURE THE TOP SECTION OF THE GRILLE COVER USING THE T-30 TORX BIT



STEP 5:

REMOVE 2 BODY CLIPS USING THE T-30 TORX BIT AND A STRAIGHT BLADE SCREW DRIVER. PUSH-IN CLIPS ARE ALL THAT SECURE THE GRILLE COVER AT THIS POINT. LIFT UP ON THE COVER TO RELEASE THEM.

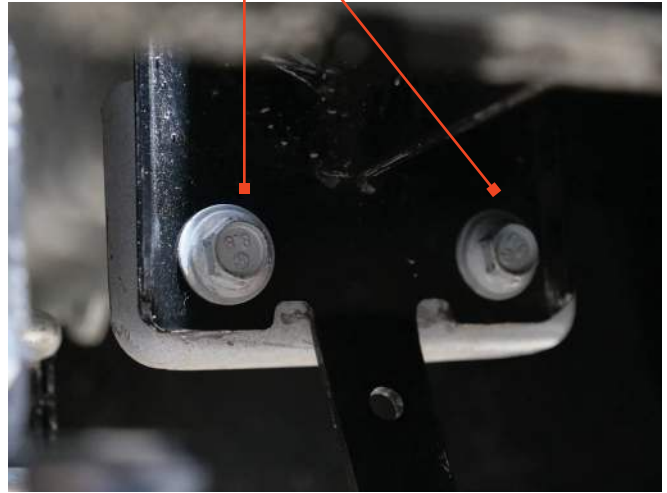
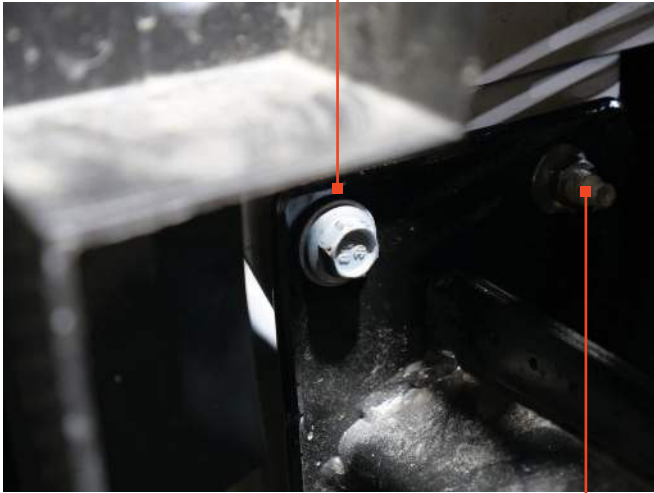
STEP 6:

REMOVE 14 BODY SCREWS USING THE T-30 TORX BIT. REMOVE LOWER BUMPER COVER.



STEP 7:

REMOVE 1 BOLT ON DRIVERS SIDE USING THE 15 MM SOCKET. REMOVE THE 2 REMAINING BOLTS.



BACK THE NUT OFF THE STUD LEAVING A FEW THREADS STILL IN.

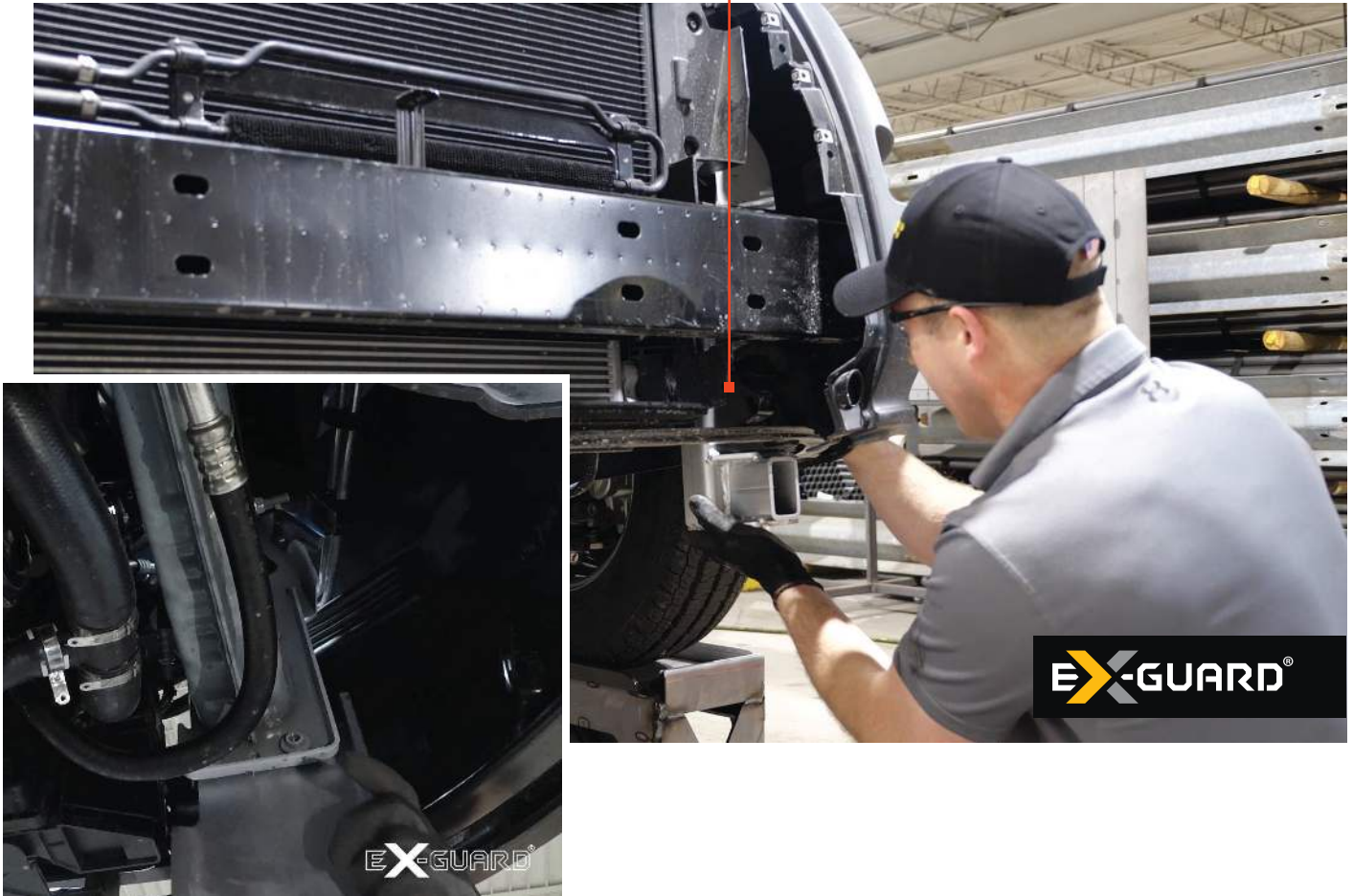
STEP 8:

PULL FORWARD SLIGHTLY ON THE FACTORY BUMPER TO ALLOW SPACE TO INSERT BRACKET. INSERT THE DRIVERS SIDE BRACKET BETWEEN THE END OF THE FRAME AND BUMPER BRACKET, WHERE THE BOLTS WERE JUST REMOVED.



STEP 9:

INSERT THE 3 10 MM BOLTS USING A 17 MM SOCKET, THEN RE-TIGHTEN THE NUT PREVIOUSLY BACKED OFF USING A 15 MM SOCKET. TORQUE ALL TO 60FT/LBS.



STEP 10:

REPEAT STEPS 7 - 9 FOR PASSENGER SIDE

STEP 11:

PRIOR TO RE-INSTALLING THE GRILLE COVER, MAKE SURE THAT THE BODY CLIPS ARE IN PLACE. THEY MAY BE STUCK IN THE BOTTOM BUMPER COVER. RE-INSTALL THE 14 BODY SCREWS USING THE T-30 TORX BIT.

STEP 12:

PUSH THE GRILLE COVER DOWNWARD TO CLIP INTO THE CLIPS, PRIOR TO FASTENING IT BACK INTO PLACE. RE-INSERT 4 BODY SCREWS AND 2 BODY CLIPS

STEP 13:

INSTALL THE BRACKETS TO THE GUARD USING THE 5/8"-11 X 2-1/2" BOLTS AND THE 15/16" SOCKET AND WRENCH. MAKE SURE TO ATTACH THE BRACKETS TO THE CENTER OF THE UPRIGHTS.



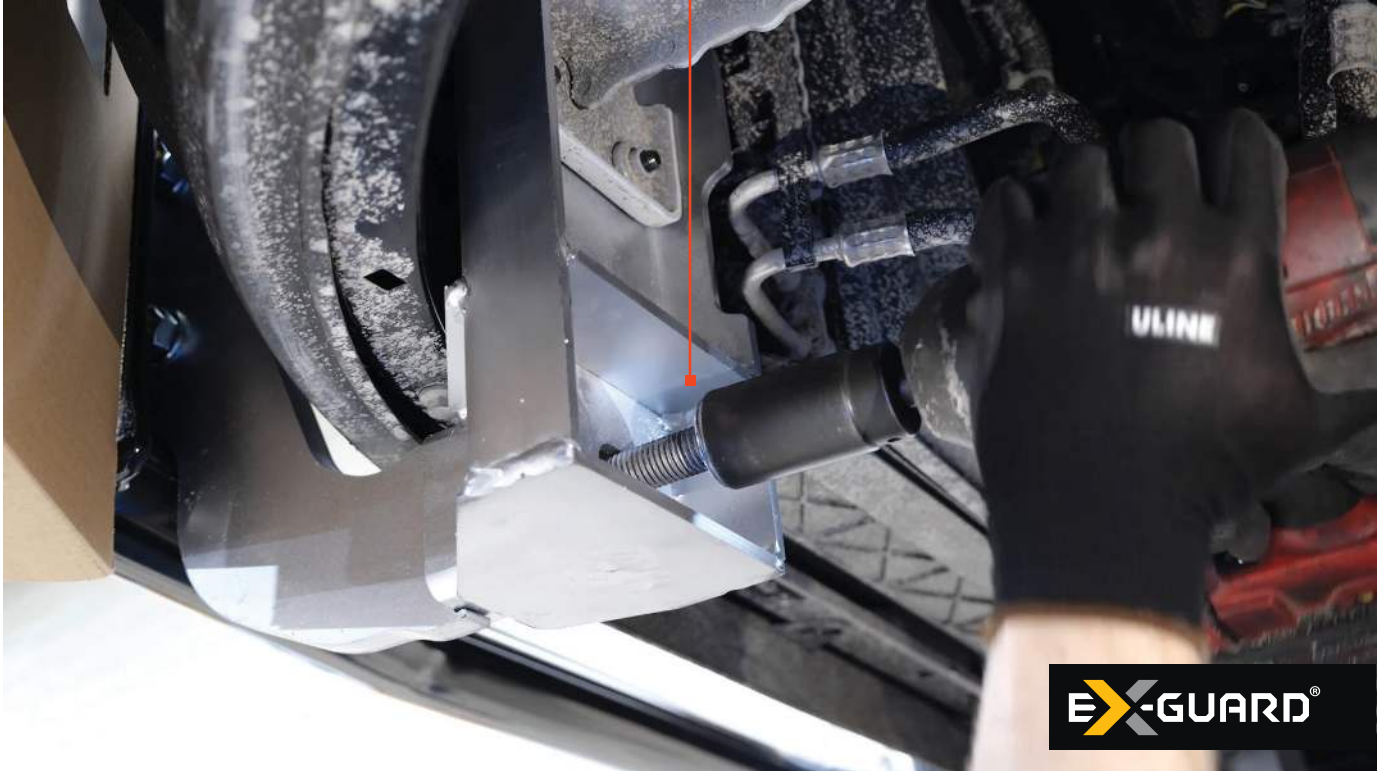
STEP 14:

INSERT THE GUARD BRACKETS INTO THE VAN BRACKETS BY SLIDING INTO THE RECEIVER TUBE.



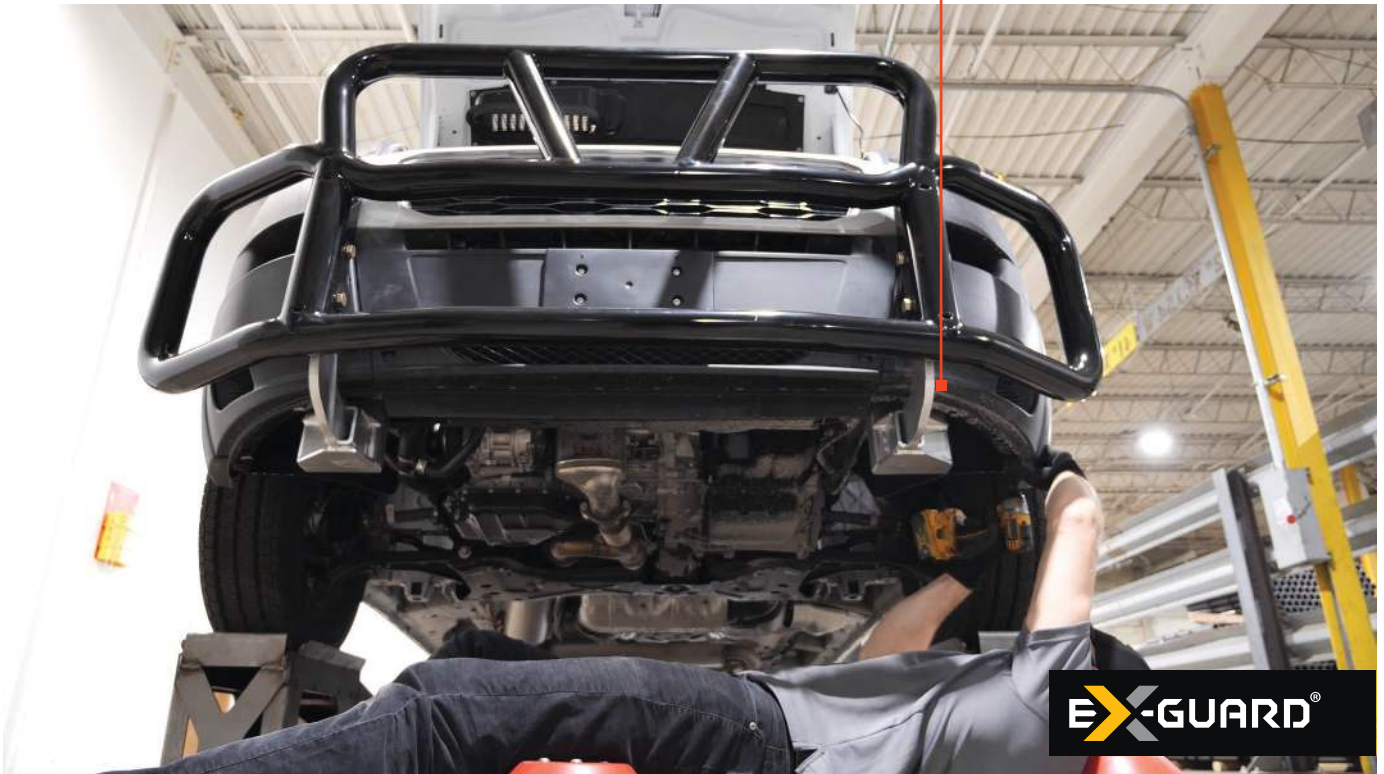
STEP 15:

INSTALL THE 3/4-10" FLANGE NUT BY USING THE 1-1/8" SOCKET. TORQUE TO 250 FT/LBS



STEP 16:

FINISH BY RE-FASTENING THE LOWER BUMPER SKIN WITH THE 6 SCREWS.



NOTE:

THE SHROUD CAN BE PUT BACK IN PLACE BY REMOVING AN AREA OF PLASTIC WHERE THE BRACKET PROTRUDES, BUT STILL LEAVING THE BOLT LOCATIONS FOR FASTENING IT INTO PLACE.