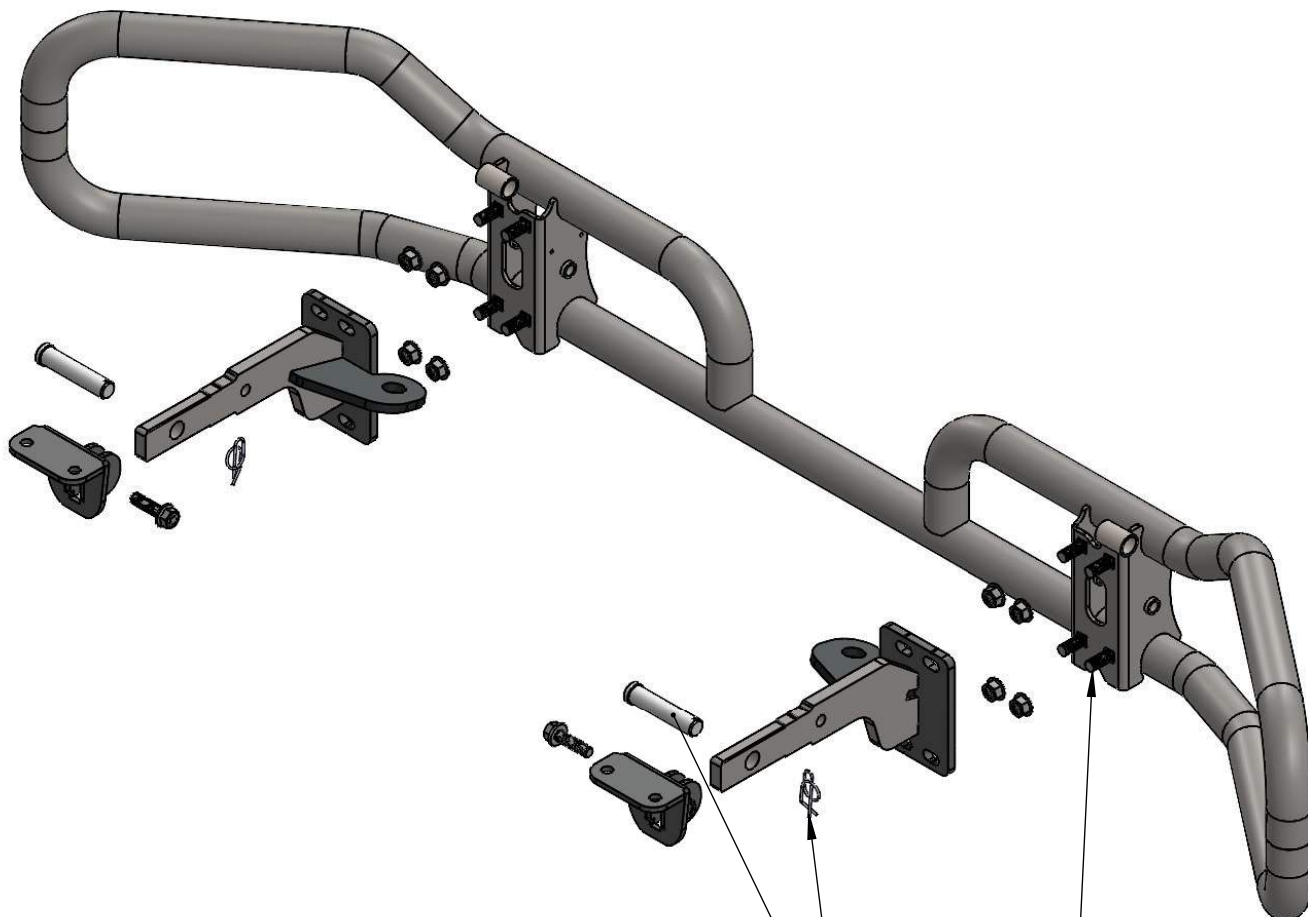




MOUNTING INSTRUCTIONS - XG-23KP MT

CALL: (888) 902-2777 FOR INSTALLATION QUESTIONS OR EMAIL: INFO@EX-GUARD.COM



(1) INSERT BRACKETS INTO TOW HOOK RECEIVERS IN TRUCK. THEN INSERT CLEVIS PIN AND LOCKING CLIP PROVIDED TO SECURE INTO PLACE.

(2) INSERT 5/8 STUDS INTO BRACKET SLOTS, INSTALL FLANGE NUTS TORQUE TO 150 FT/LBS



IMPORTANT!! Any Ex-Guard grille guard, bracket kit, or hardware must be used with corresponding Ex-Guard components. Use of any other product or brand with Ex-Guard products will immediately void the warranty provided by Ex-Guard Industries.

© THIS DRAWING IS THE PROPERTY OF EX-GUARD INDUSTRIES, INC. COPYRIGHT IS RESERVED BY THEM AND THE DRAWING ISSUED ON CONDITION THAT IT MUST NOT BE USED FOR ANY OTHER PURPOSE OTHER THAN FOR WHICH IT WAS SUPPLIED AND NOT TO BE COPIED, REPRODUCED, RETAINED OR DISCLOSED TO ANY UNAUTHORIZED PERSON EITHER WHOLLY OR IN PART WITHOUT THE CONSENT IN WRITING OF EX-GUARD INDUSTRIES INC.



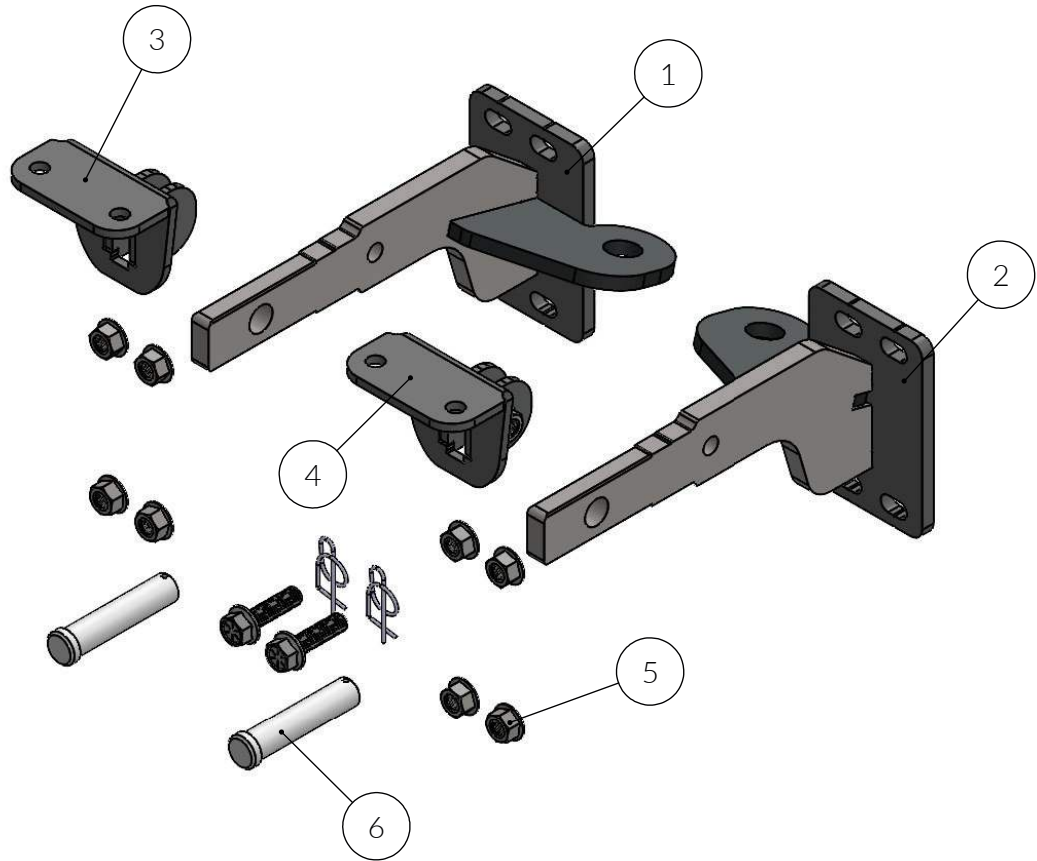
CALL: (888) 902-2777 FOR INSTALLATION QUESTIONS OR EMAIL: INFO@EX-GUARD.COM

PARTS LIST - XG-23KP

BOLT KIT - XG-23KP-BK & XG-BRK23

COMPATIBLE GUARDS

- Check <https://ex-guard.com/>



ITEM NO.	PART NUMBER	DESCRIPTION	QTY.
1	XG-23KP-BR10DS	DRIVERS SIDE BRACKET	1
2	XG-23KP-BR10PS	PASSENGER SIDE BRACKET	1
3	XG-23KP-BR07SAA	TOP SUPPORT BRACE	1
4	XG-23KP-BR07SAB	TOP SUPPORT BRACE	1
5	XG-001-62CNWFOZ_HARD	5/8-11 FLANGE AUTO LOCKNUT	8
6	XG-23KP-BK	INCLUDES ALL FASTENERS FOR XG-23KP	1

ATTENTION!! Any Ex-Guard grille guard, bracket kit, or hardware must be used with corresponding Ex-Guard components. Use of any other product or brand with Ex-Guard products will immediately void the warranty provided by Ex-Guard Industries.



XG-23KP Installation Instructions.

Applicable Trucks;

Kenworth New Gen T-680 Plastic, or Metal Bumper

Peterbilt New Gen P-579 Plastic, or Metal Bumper

1. Locate receiver opening, remove cover if necessary

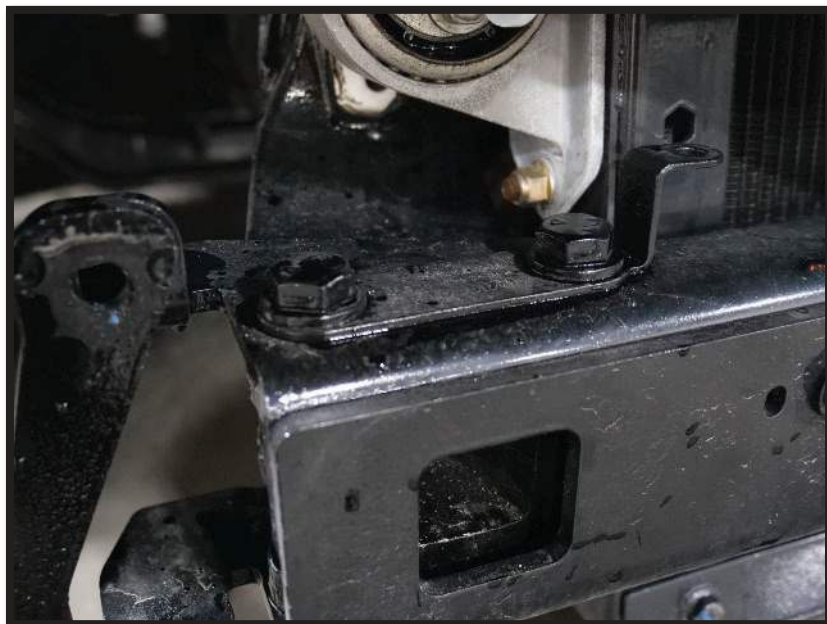


2. Open hood, locate 2 bolts per side, and remove them, keep for reinstall.

Take notice of hook, that supports bumper, during install.



3. Locate these 2 bolts and remove them. Along with the wire Support bracket



You may have to use a prybar as shown to take any pressure off them to remove them.

4. Install the top support brace, by placing on the frame and reinserting the bolts and wire support bracket, torque to 225 ft/lbs



5. Repeat on the Drivers side. Use a pry bar to flex the bracket supporting the wire harness, then locate these 2 bolts and remove them.



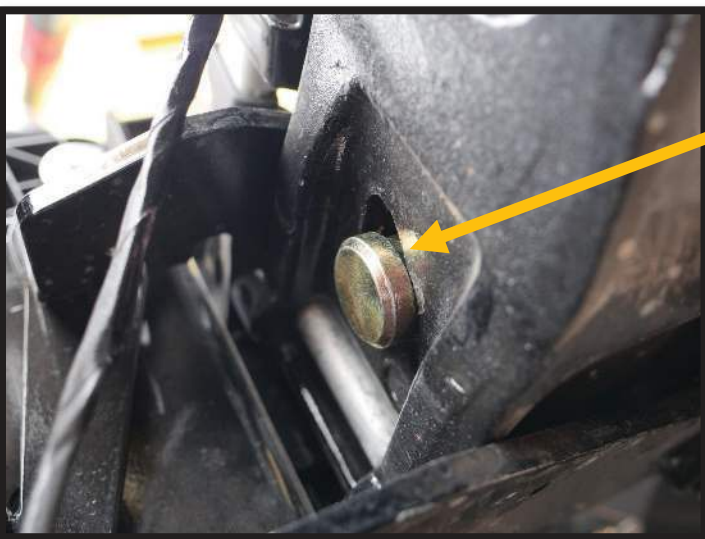
6. Install the top support brace, by placing on the frame and reinserting the bolts and wire support bracket, torque to 225 ft/lbs



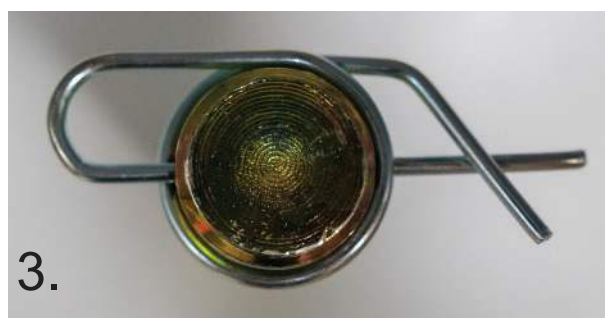
7. Put the bumper back in place, but do not put the 4 bolts in at this time. As you will have to move it, to complete the final Install.



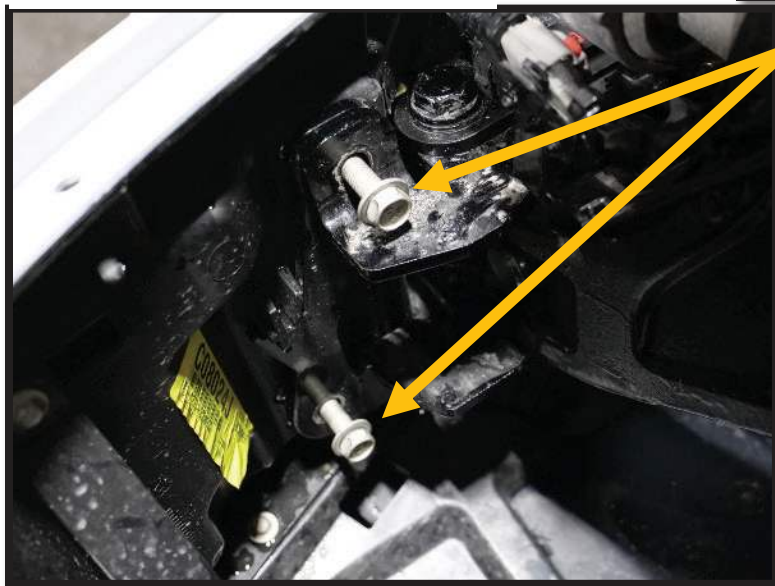
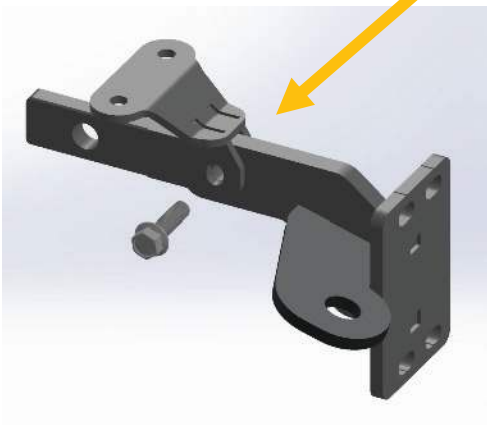
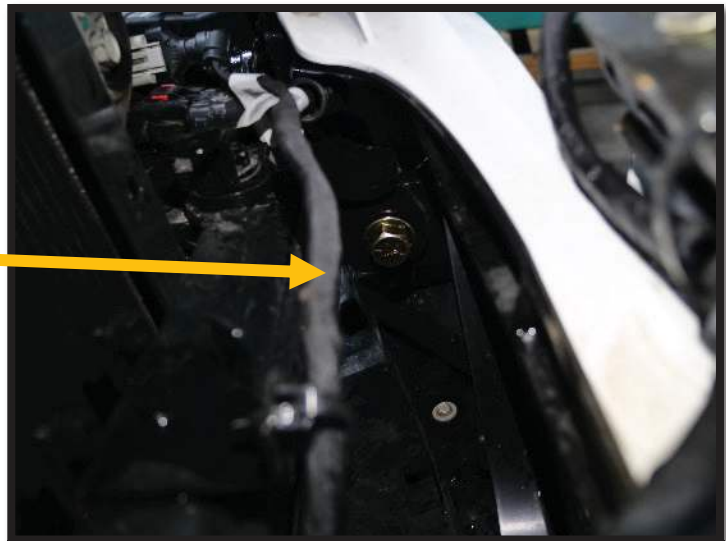
8. Install the Ex-Guard brackets through the bumper and into the receiver. The tow hook should be towards the center of the truck, and the bracket sloping down as shown.



9. Insert the retaining clevis pin through the frame and bracket as shown. And insert the locking ring cotter pin to secure it.



10. With both brackets inserted in and pined, pull the bumper forward, to allow room to insert the bolt from center of truck through the top support brace, and the bracket. Then put the nut on and torque to 225ft/lbs



11. Put bumper back in place and torque these 2 bolts per side to factory spec, then proceed to mount the Ex-Guard!

