



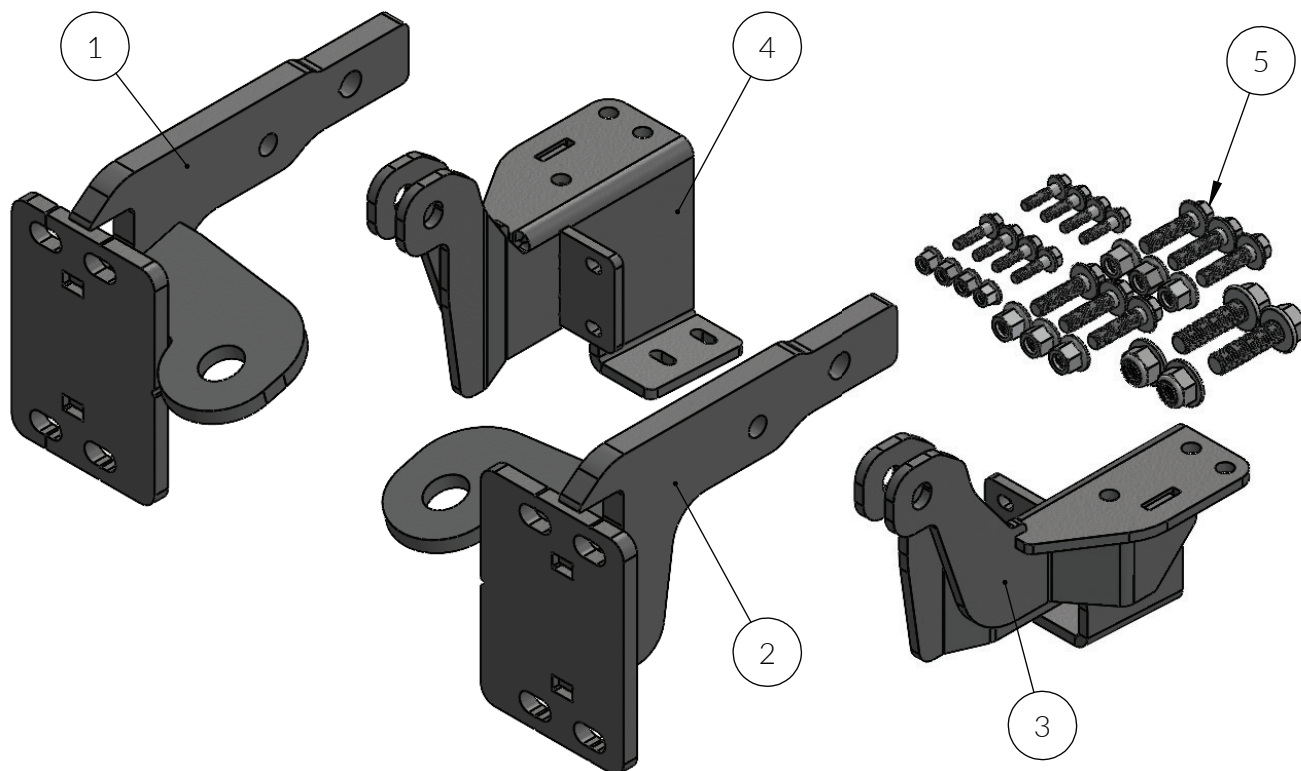
CALL: (888) 902-2777 FOR INSTALLATION QUESTIONS OR EMAIL: INFO@EX-GUARD.COM

PARTS LIST - XG-22VNL

BOLT KIT: XG-22VNL BK

COMPATIBLE GUARDS

- Check <https://ex-guard.com/>



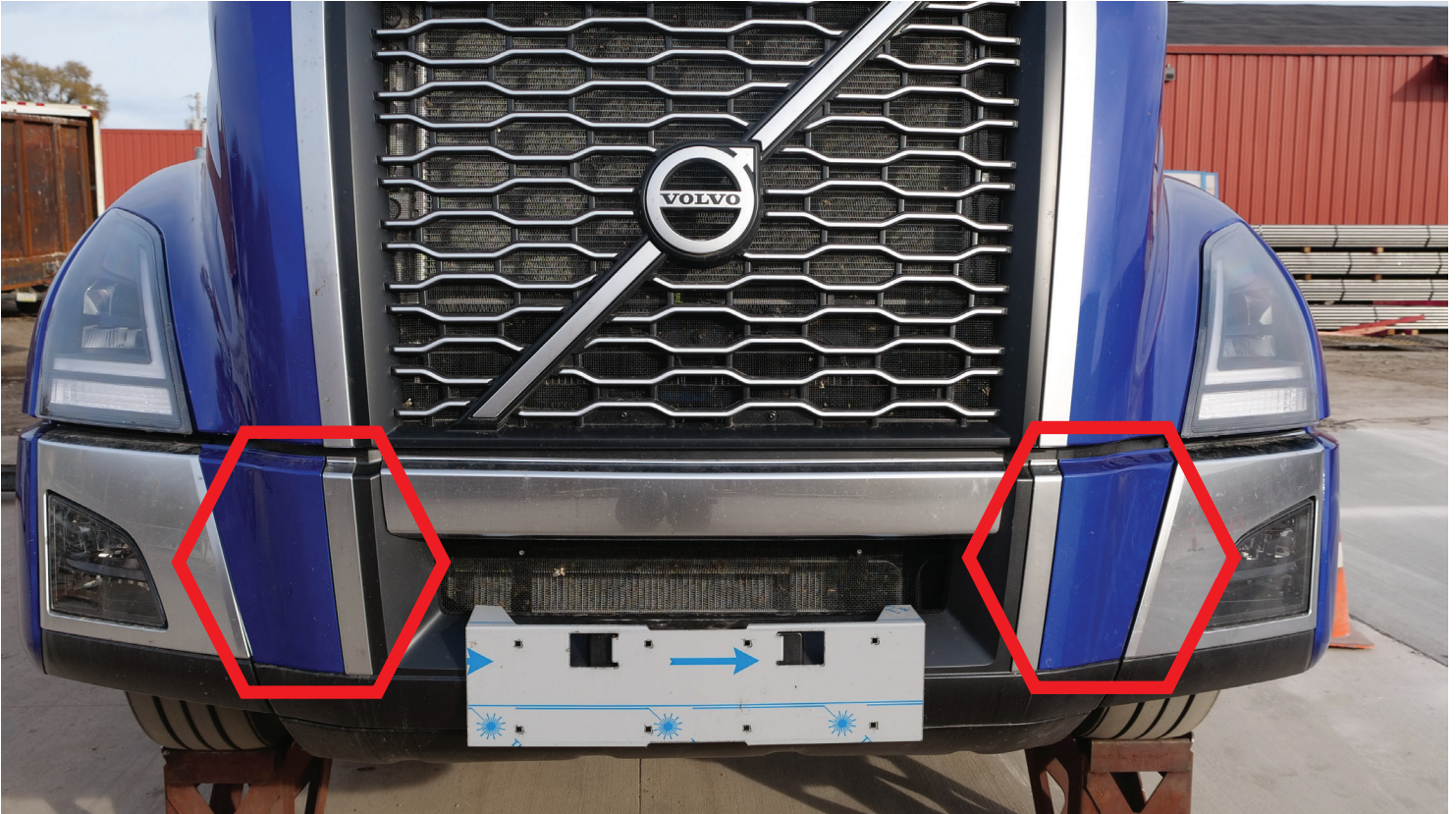
ITEM NO.	PART NUMBER	DESCRIPTION	QTY.
1	XG-22VNL-BR10R	MOUNTING BRACKET (RS)	1
2	XG-22VNL-BR10L	MOUNTING BRACKET (LS)	1
3	XG-22VNL-BR04L SA	SUPPORT BRACKET (LS)	1
4	XG-22VNL-BR04R SA	SUPPORT BRACKET (RS)	1
5	XG-22VNL-BK	INCLUDES ALL FASTENERS FOR XG-22VNL	1

ATTENTION!! Any Ex-Guard grille guard, bracket kit, or hardware must be used with corresponding Ex-Guard components. Use of any other product or brand with Ex-Guard products will immediately void the warranty provided by Ex-Guard Industries.

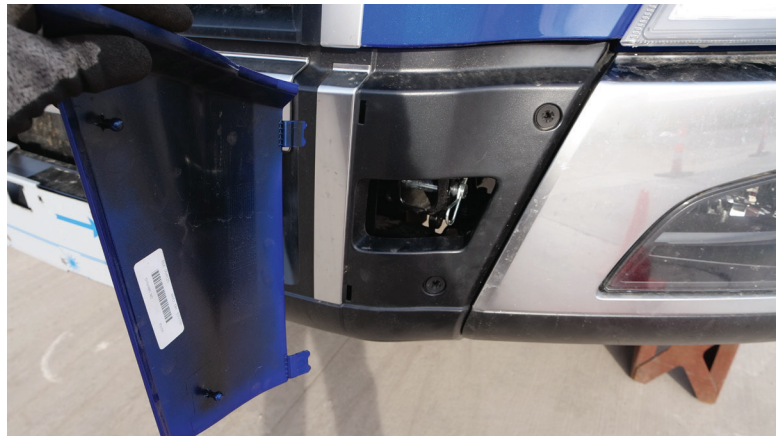
THIS DRAWING IS THE PROPERTY OF EX-GUARD INDUSTRIES, INC. COPYRIGHT IS RESERVED BY THEM AND THE DRAWING ISSUED ON CONDITION THAT IT MUST NOT BE USED FOR ANY OTHER PURPOSE OTHER THAN FOR WHICH IT WAS SUPPLIED AND NOT TO BE COPIED, REPRODUCED, RETAINED OR DISCLOSED TO ANY UNAUTHORIZED PERSON EITHER WHOLLY OR IN PART WITHOUT THE CONSENTIN WRITING OF EX-GUARD INDUSTRIES INC.

XG-22VNL Installation Instructions

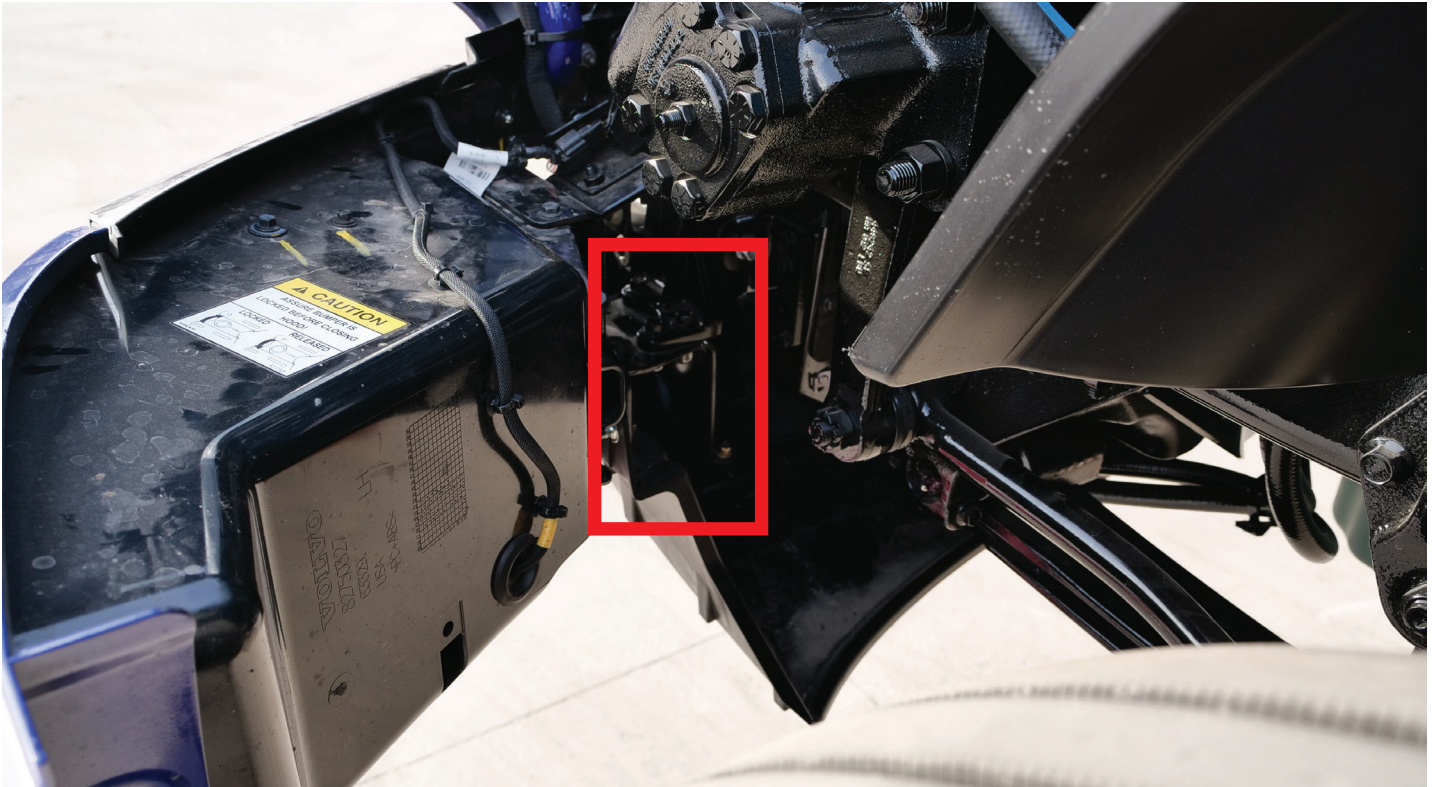
1. Locate Receiver Openings



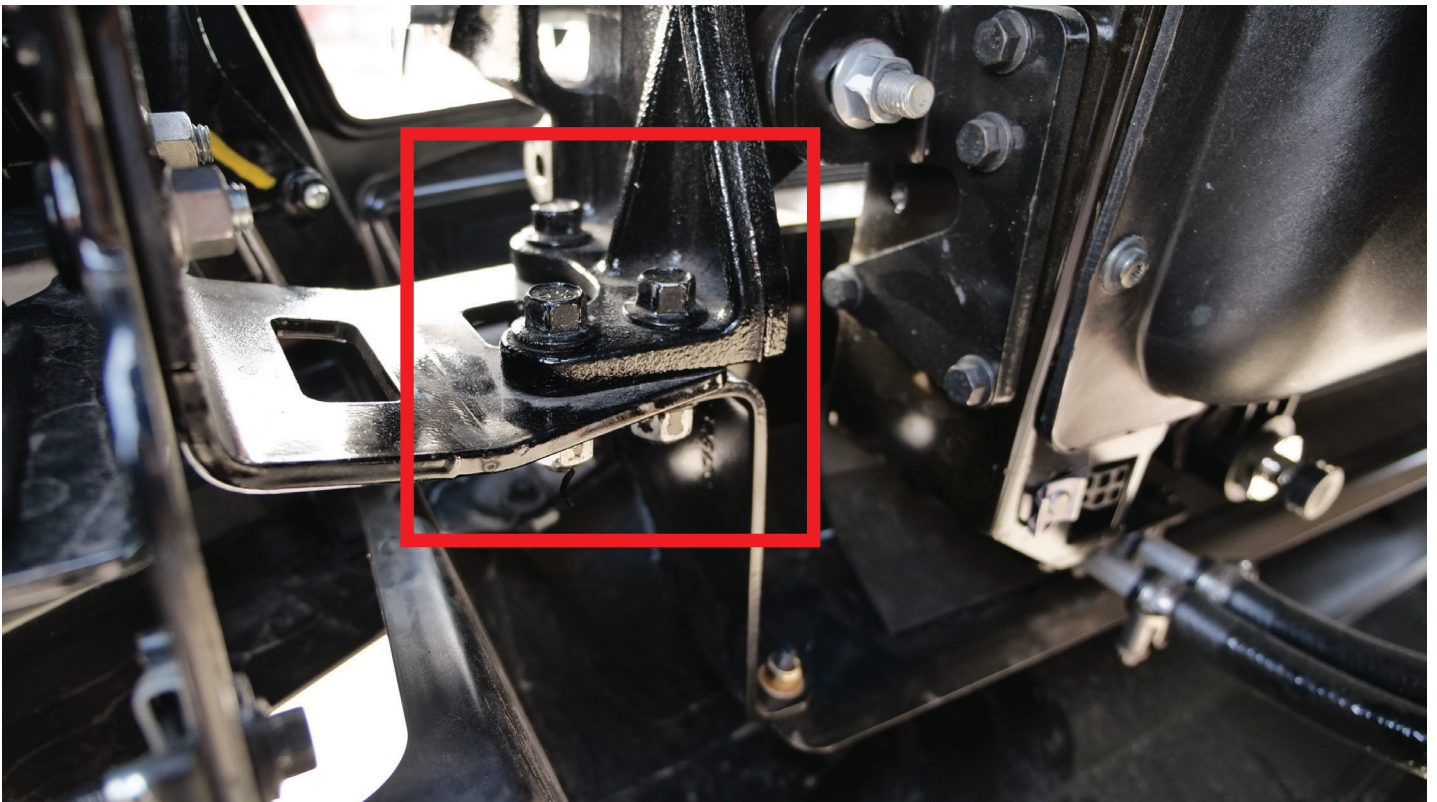
2. Remove Receiver Covers By Pulling From Outside Top Corner



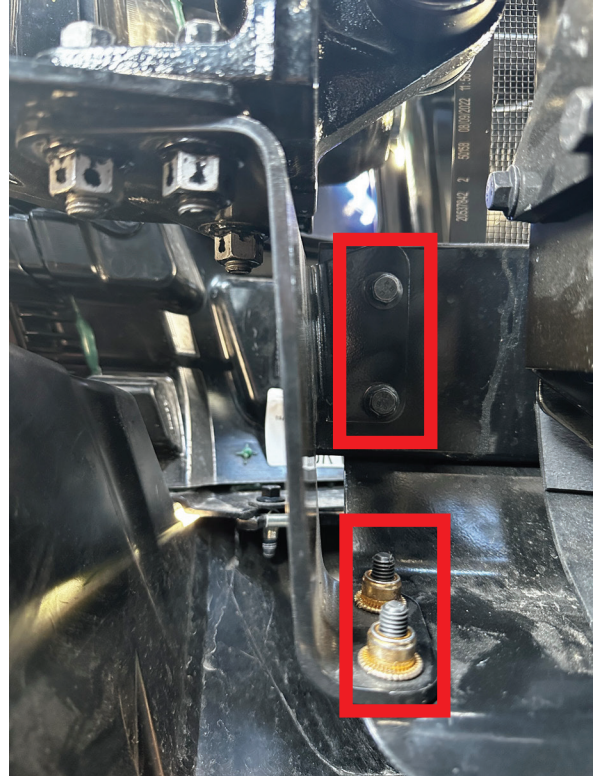
3. Open Hood To Access Support Bracket & Bolts



4. Remove These 3 Bolts



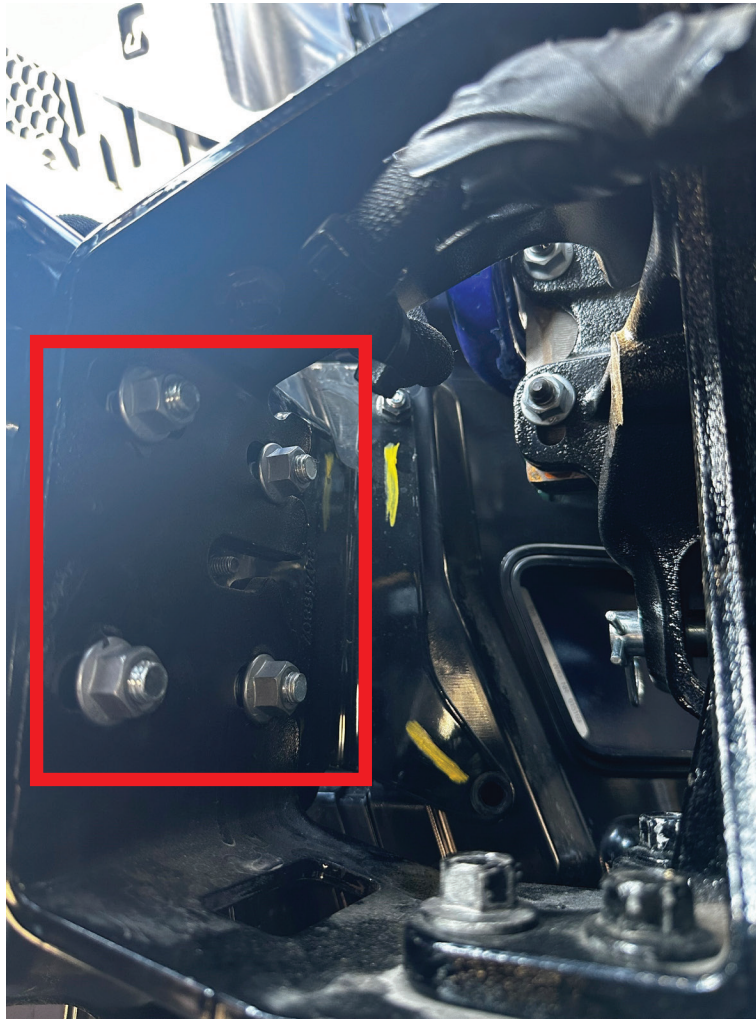
5. If Truck Has Collision Mitigation Hardware,
Remove These Bolts And Discard The Bracket & Bolts



6. Visual Reference When Bolts & Brackets Are Removed
(Collision Mitigation Hardware Is shown In Photo)



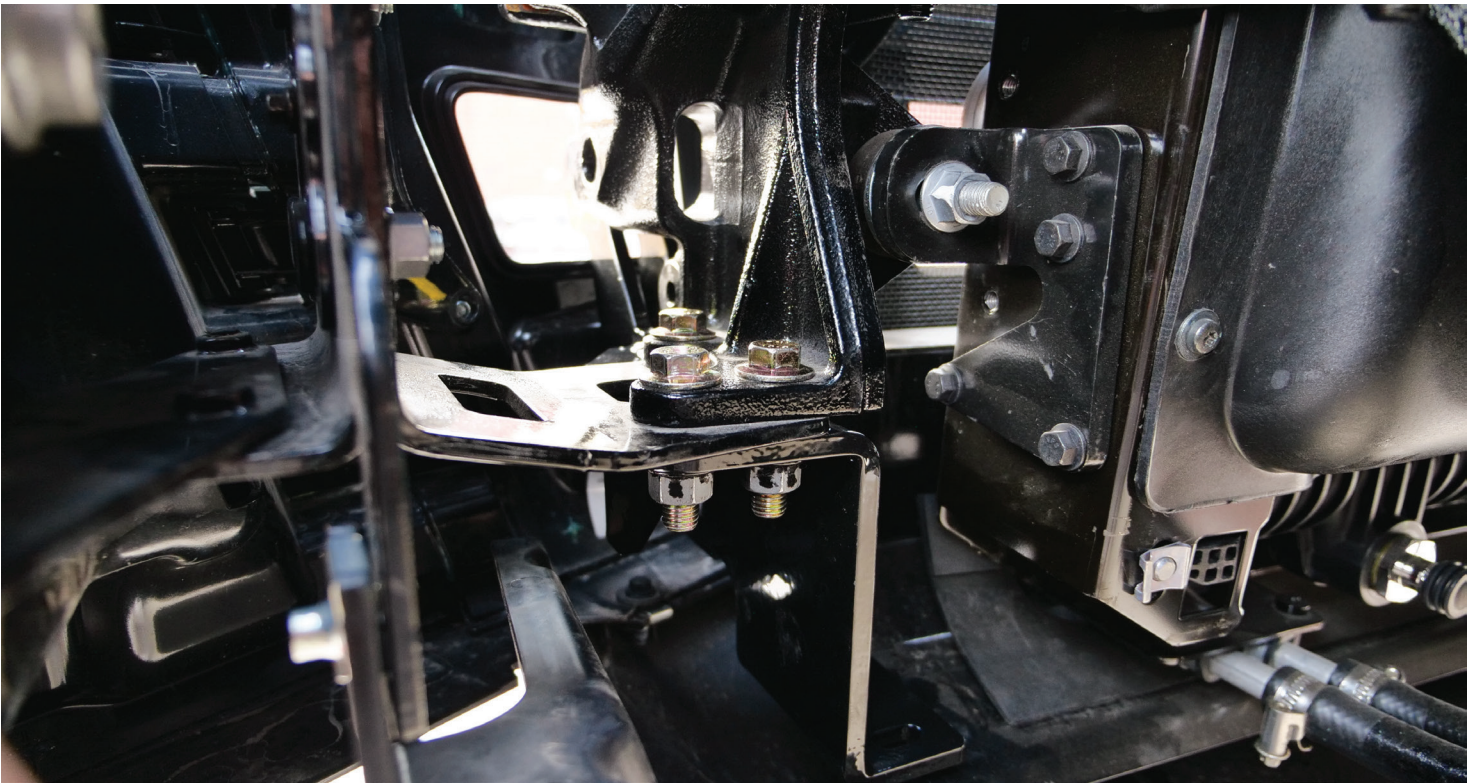
7. To Install Bracket Behind Bumper,
Loosen These 4 Bolts, But Do Not Remove Bolts Completely



8. To Install XG-22VNL BR04, Shut Truck Hood & Pull Bumper Forward.
This Will Allow Clearance To Install XG-22VNL BR04



9. Re-Install Bolts (New Bolts From Bolt Kit Included). Torque Bolts to 93 FT-LBS

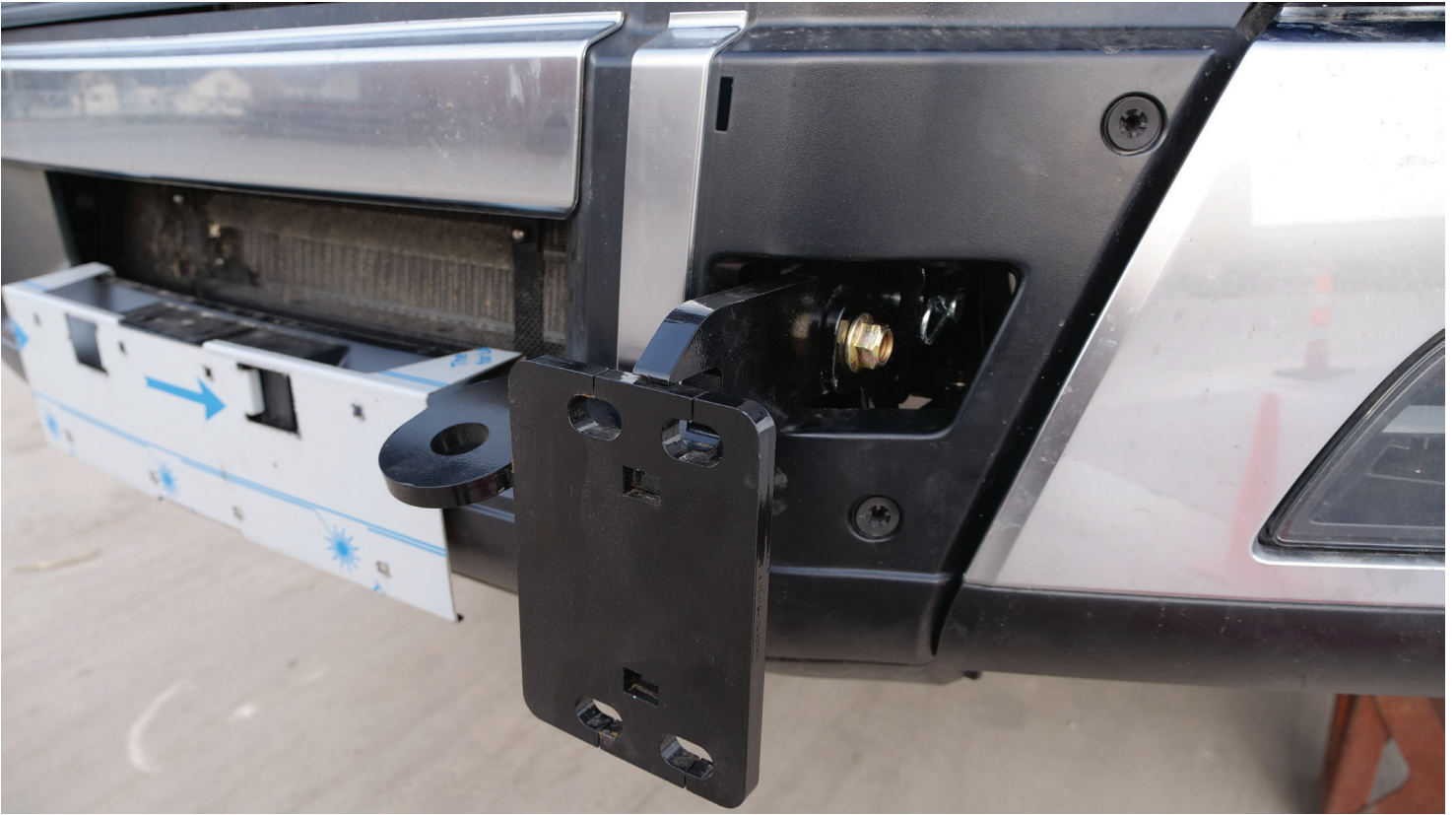


10. Visual Reference Of Installed XG-22VNL BR04

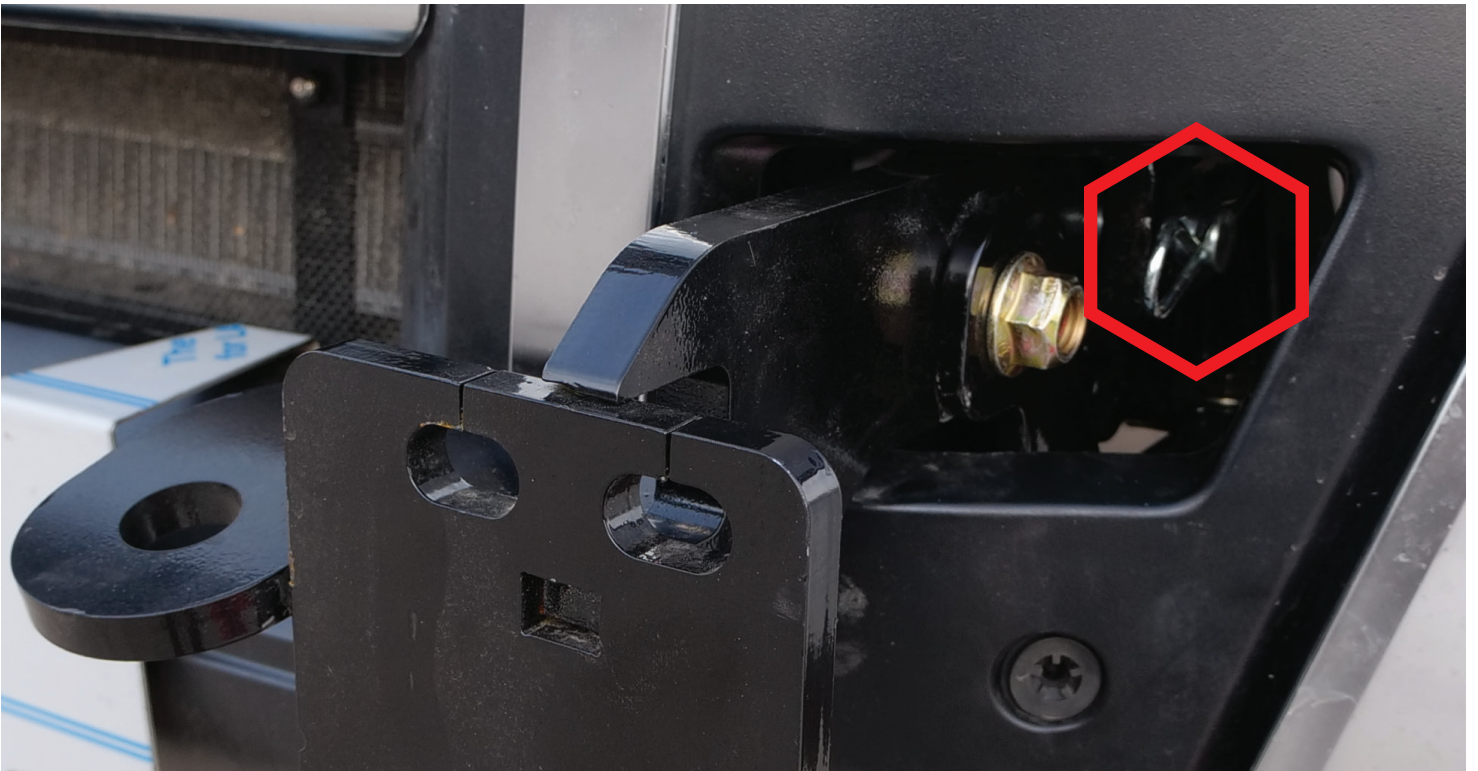


11. Repeat Steps 3 Through 10 For Opposite Side

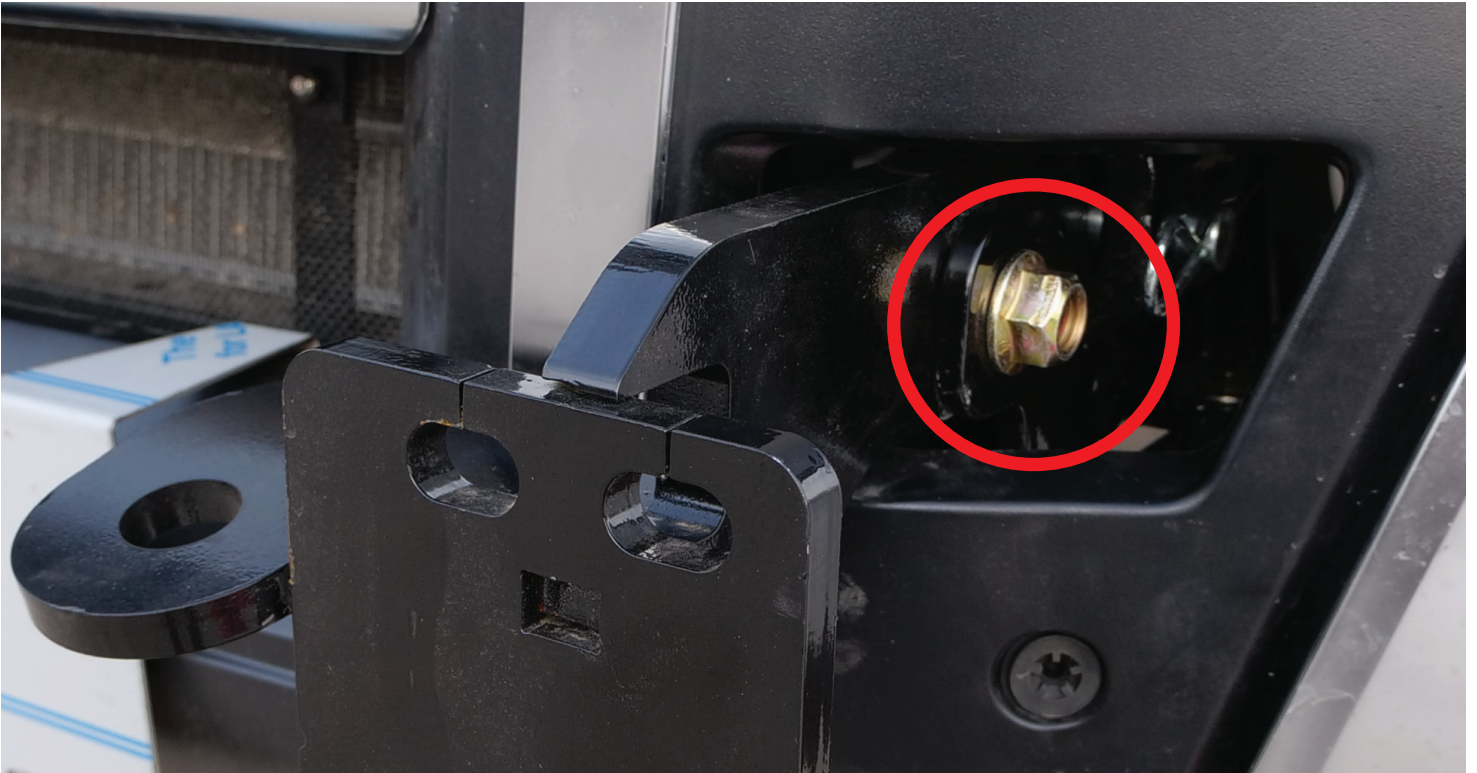
12. Visual Reference of Installed XG-22VNL BR10 after XG-22VNL BR04 Installed.
Take Note, When XG-22VNL BR10 is Installed, the Tow Hooks Should be Facing Inward



13. Insert Clevis Pin Through Tow Hook Receiver & Bracket.
Insert Locking Ring Cotter Pin To Secure Bracket

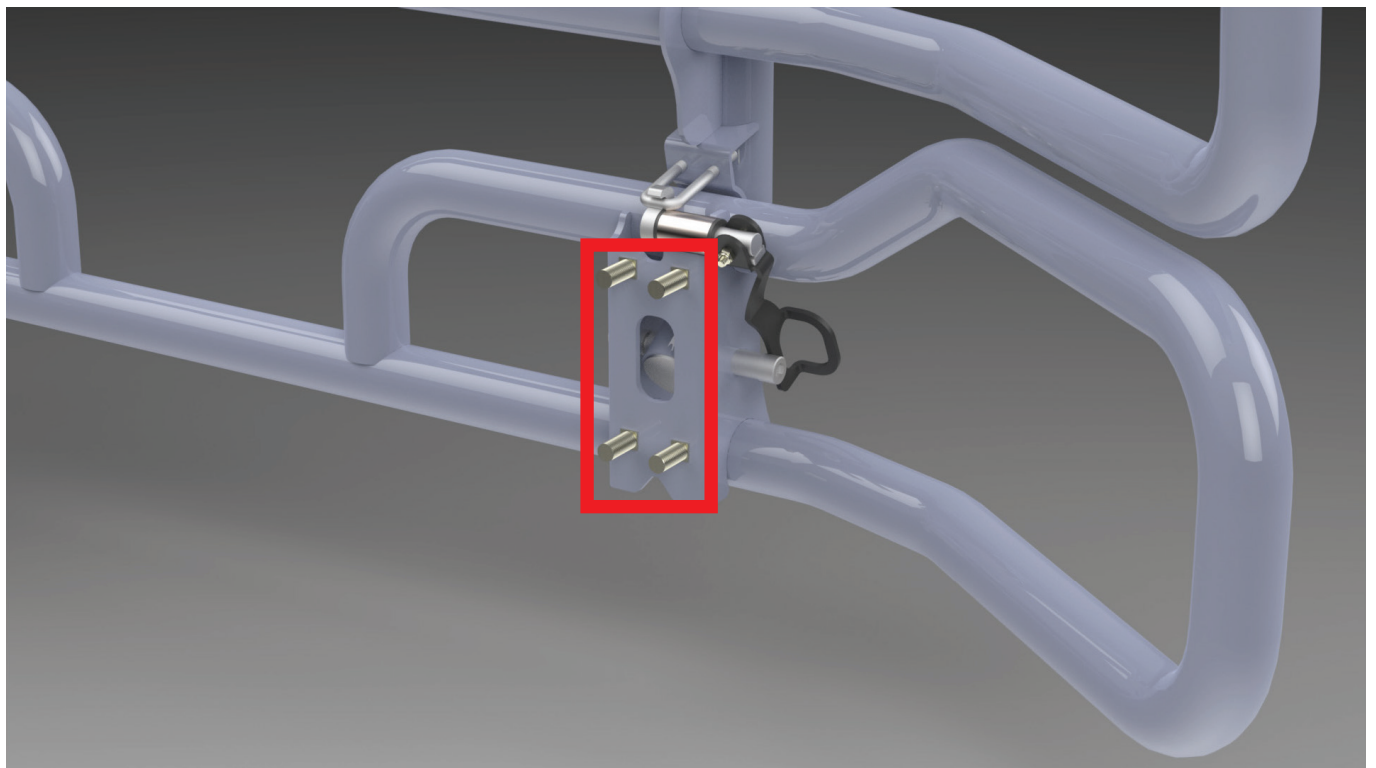


14. Insert Bolt & Nut
Torque To 225 FT/LBS

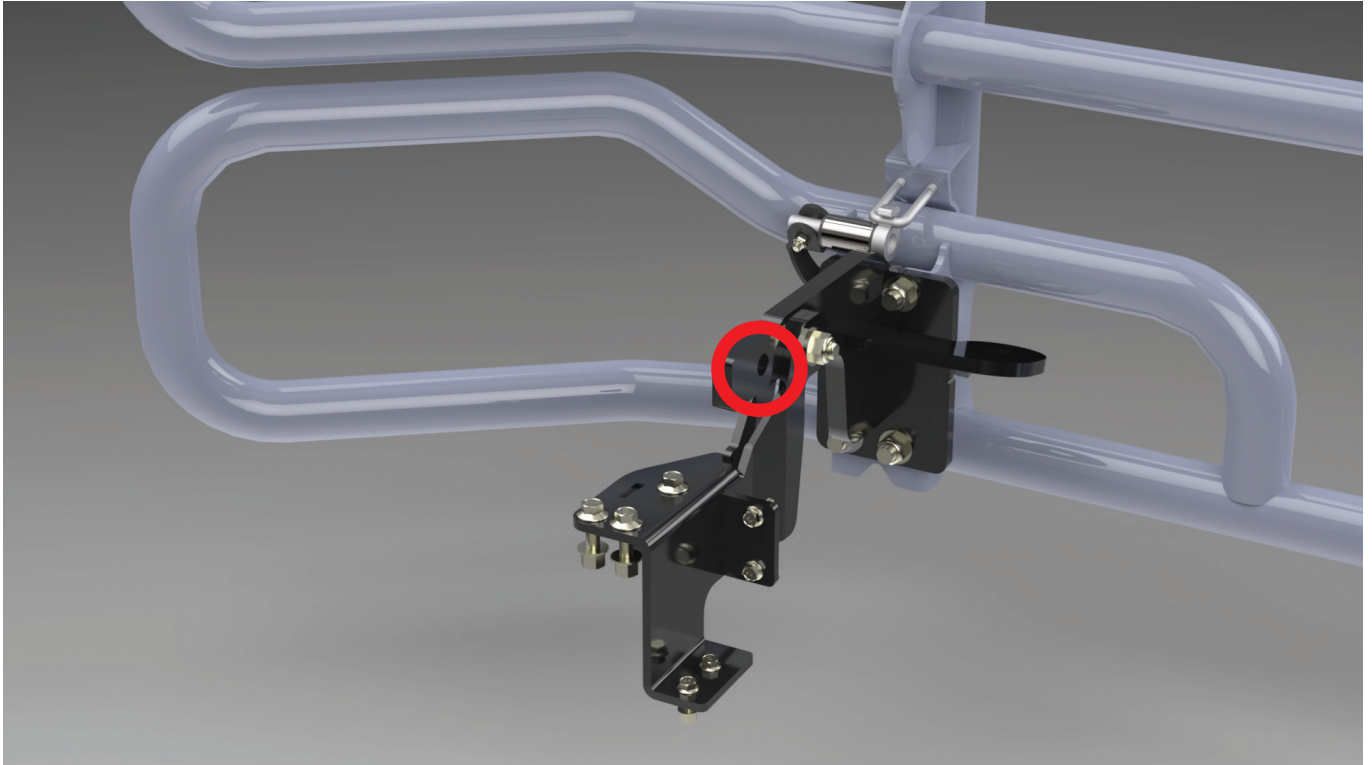


15. Repeat Steps 12 Through 14 For Opposite Side

16A. Visual Reference: Back Side of The Ex-Guard
(Insert Studs into Bracket Face Plate Holes, Install Flange Nuts & Torque To 200 FT/LBS)



16B. Visual Reference Brackets Assembled and Mounted To The Ex-Guard
(Clevis Pin and Locking Clip Gets Inserted At Location Callout)



17. Visual Reference of The Ex-Guard With Brackets and Hardware When Mounted To Truck

