

XG-18KP MOUNTING INSTRUCTIONS

TRUCKS THIS BRACKET FITS

KENWORTH

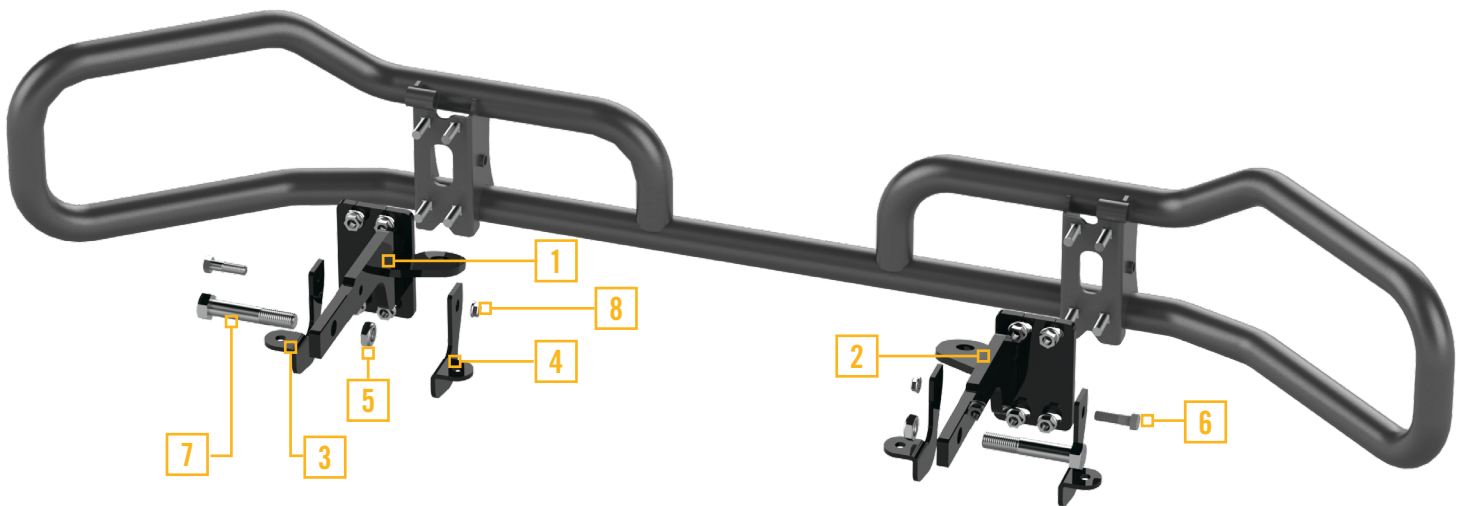
- T660 - 2007 TO CURRENT
- T680 - 2012 TO CURRENT
- T700 - 2010 TO CURRENT

PETERBILT

- 384
- 386 - 2007 TO CURRENT
- 579 - 2012 TO CURRENT
- 587 - 2011 TO CURRENT

GUARDS THAT FIT

- XG 100 SERIES
- LT 300 SERIES
- HD 400 SERIES



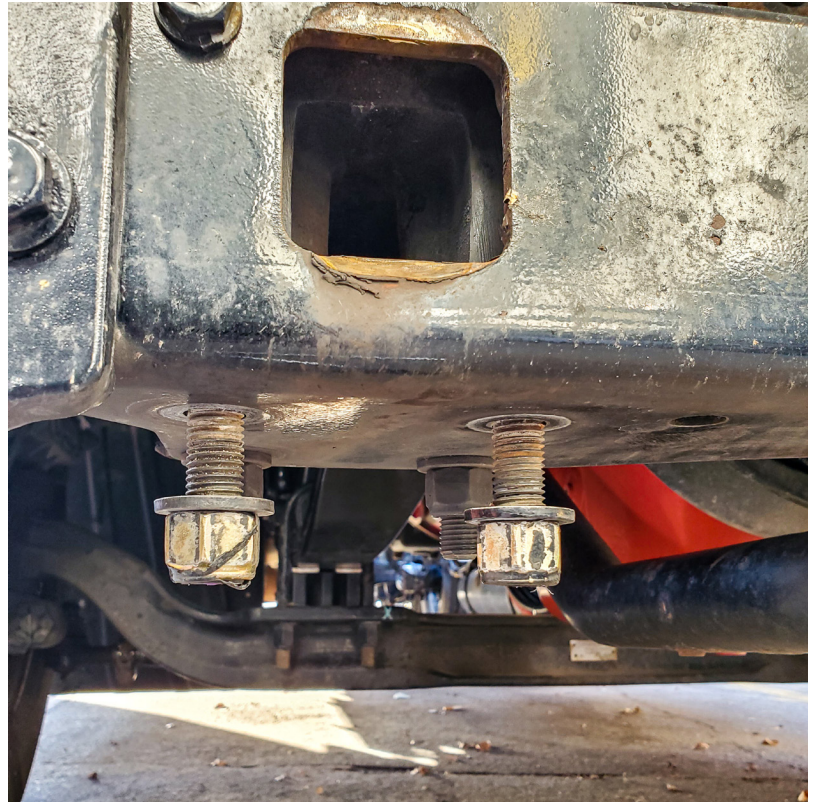
	QTY	PART NUMBER	DESCRIPTION
1	1	XG-18KP-BR10L	DRIVER SIDE BRACKET
2	1	XG-18KP-BR10R	PASSENGER SIDE BRACKET
3	2	XG-21KP-BR05L	PART A RETAINER
4	2	XG-21KP-BR05R	PART B RETAINER
5	2	91342A260	1/8 THIN LOCKNUT
6	2	XG-001-62C225HCS8Y	5/8-11 X 2-1/4 BOLT
7	2	XG-001-100C550HCS8Y	1/8 X 5.50 BOLT
8	2	XG-001-62CNWFOY	5/8-11 SERRATED FLANGE NUT

STEP 1

REMOVE BUMPER BY REMOVING 2 BOLTS ON EACH SIDE OF THE TRUCK IN FRONT OF THE STEER TIRES AND BEHIND THE BUMPER.

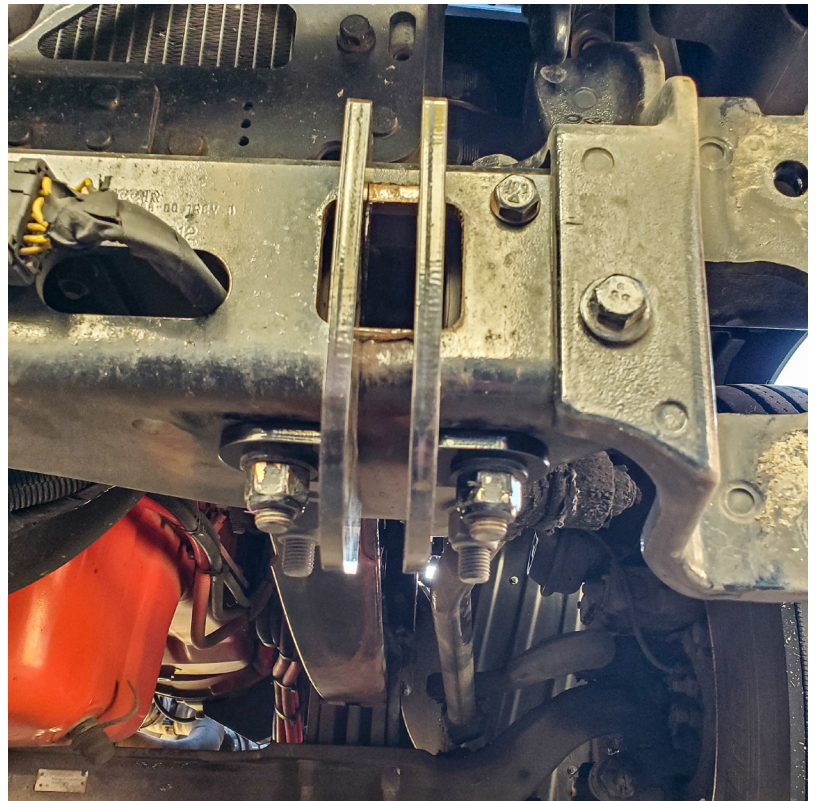
STEP 2

REMOVE FRONT 2 NUTS ON BOTH THE DRIVER AND PASSENGER SIDE OF THE FRAME AS SEEN HERE.



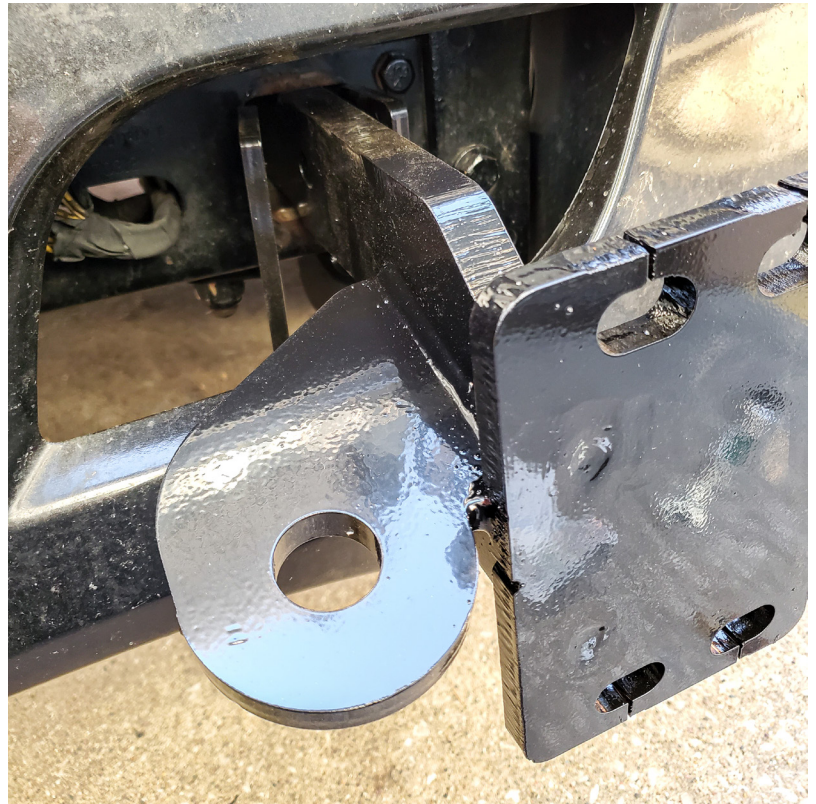
STEP 3

INSTALL BOTH AN A AND B RETAINER. TIGHTEN BOLTS BUT LEAVE A LITTLE WIGGLE ROOM. REPEAT ON OPPOSITE SIDE

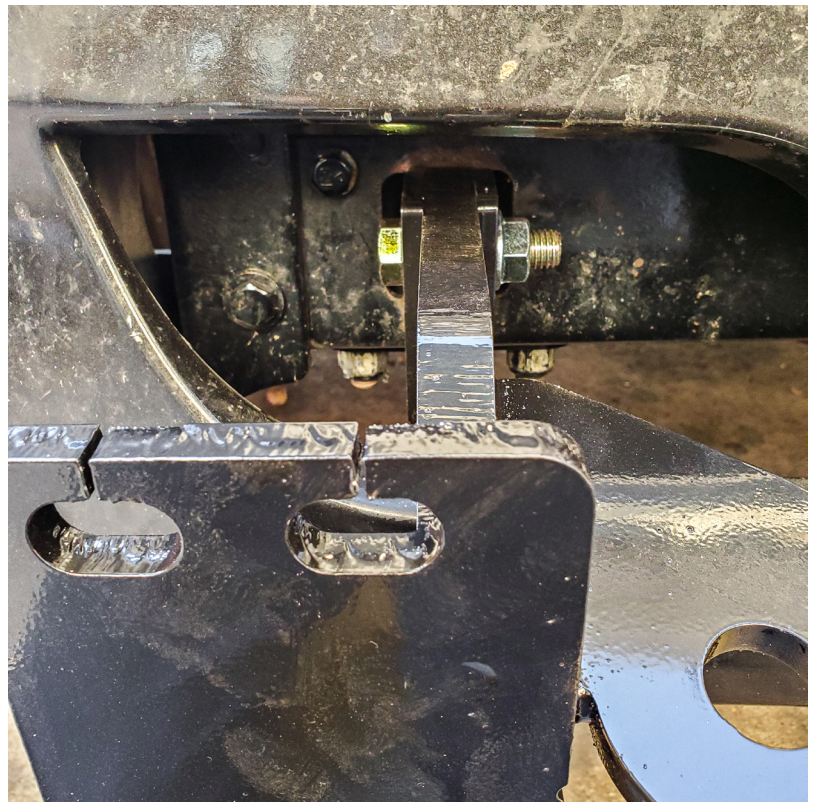


STEP 4
REINSTALL BUMPER.

STEP 5
INSERT BRACKET BETWEEN
RETAINERS AND INSERT 5 1/5"
LONG BOLT TO SECURE BRACKET TO
TRUCK AND TREAD THIN LOCKNUT TO
SECURE.



STEP 6
INSERT 2 1/2" BOLT AND NUT
THROUGH RETAINERS AND BRACKET.
FIRST TORQUE THE BOTTOM 2 NUTS
AND THEN TORQUE THE 2 1/2" BOLT
AND NUT. TORQUE BOTH TO 220 FT/
LBS.



STEP 7

INSERT GUARD INTO THE BRACKETS
AND TORQUE BOLTS TO 150 FT/LBS.



QUESTIONS?

CALL 888.902.2777
OR
EMAIL CUSTOMERCARE@EX-GUARD.COM

